

Facade options and features



Executive Facade

Roof Type
Tiles

Total m²/Sq
273.10/29.3



Metro Facade

Roof Type
Tiles

Total m²/Sq
273.04/29.3



Note: Artist's impressions and pictures shown in this brochure may not be standard finishes – please refer to standard inclusions list for details. Photographs may depict homes from other design ranges and are used for illustrative purposes only. Manhattan, Hamptons, and Provincial facades, as well as gables, are not available for projects classified under BAL Flame Zone (BAL-FZ) due to certification complexities.

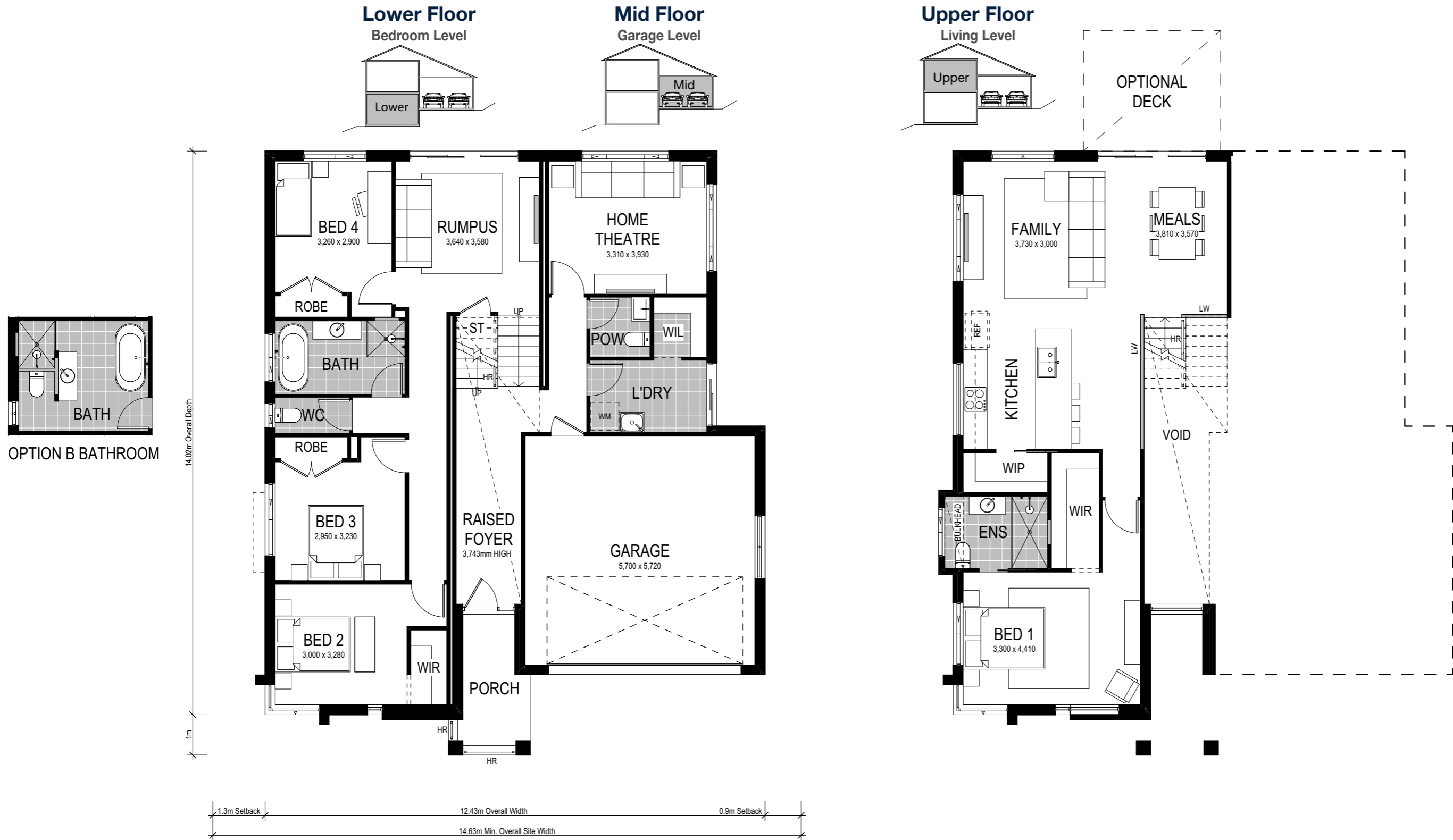
Important - please read - copyright ©

All brochures, sketches & plans, whether conceptual or architectural, that we have developed on your behalf remain the property of Montgomery Homes under copyright law & we retain & claim all rights to these plans. Despite popular belief, changing our plans by 50% or more does not avoid legal responsibility for a copyright breach.



San Remo 273





Scale: 1:100. Floor plan depicts Executive facade.

San Remo 273

- 4 Bed
- 2.5 Bath
- 2 Park

Our sloping site specialist techniques have been applied to our San Remo 273, featuring a split-level slab design for a sideways slope. Entering the home on the mid-level, you're presented with the first of the three living areas — the home theatre, plus a study, powder room and laundry with external access. The upper level highlights an open plan living and dining area, modern kitchen with walk-in pantry, optional adjoining deck and master bedroom with ensuite and walk-in-robe. The lower level hosts the rumpus room, main bathroom and three more bedrooms — each with their own walk-in robe.

Our specially designed homes for sloping sites feature many benefits:

- ✓ Abundant natural light and air-flow
- ✓ Separate living areas on different levels
- ✓ Preserve natural drainage
- ✓ Enhance outlooks and views
- ✓ Unique and architectural looking design
- ✓ Less excavation
- ✓ A flatter driveway
- ✓ Designed to follow slope of land
- ✓ Maximise space