



MONTGOMERY
HOMES





Whitehaven 306



SLOPING
SITES



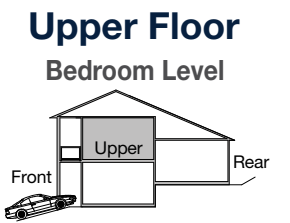
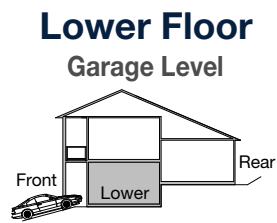
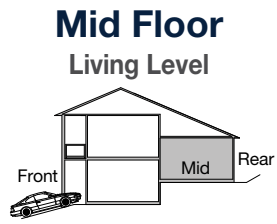
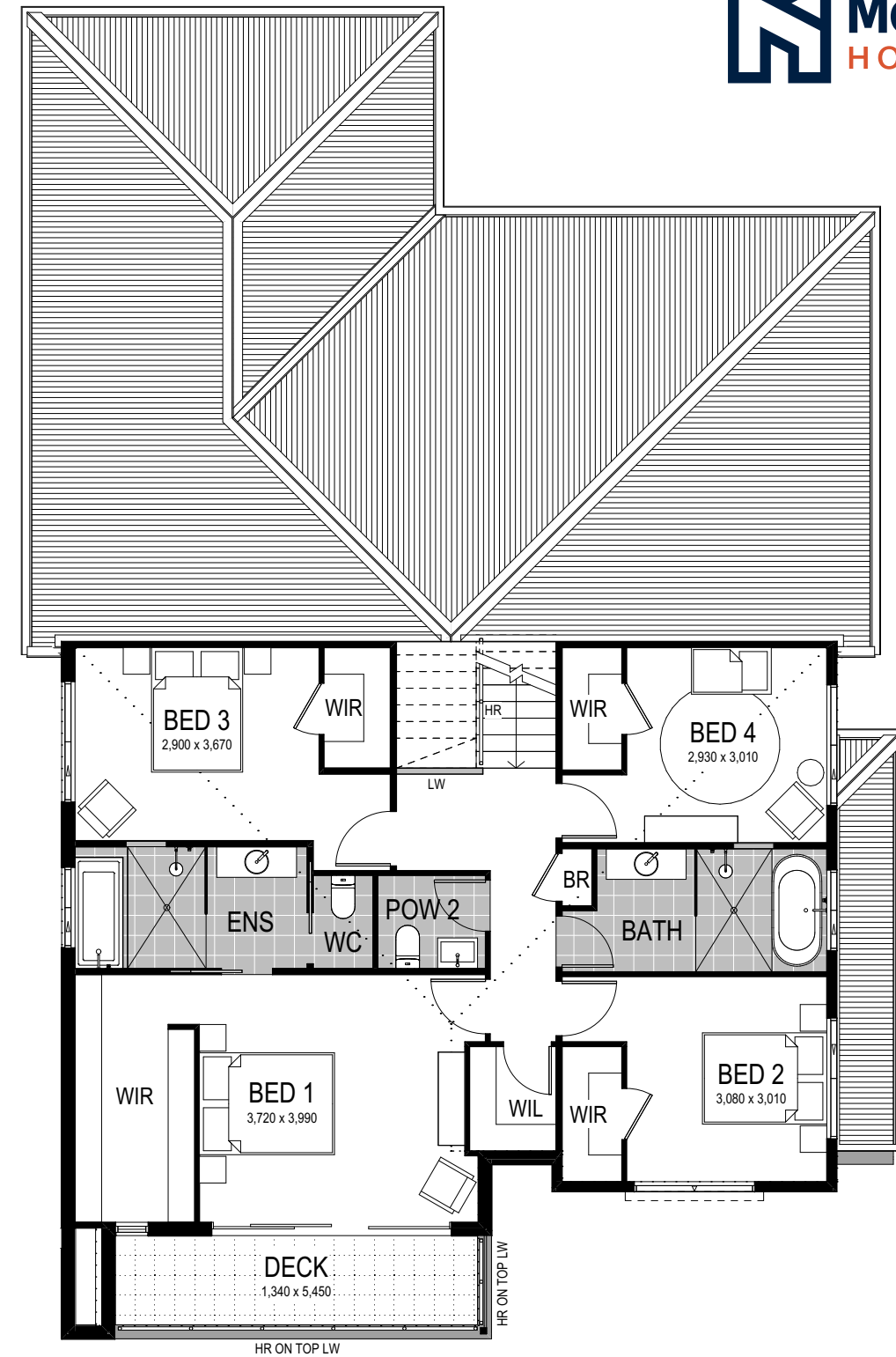
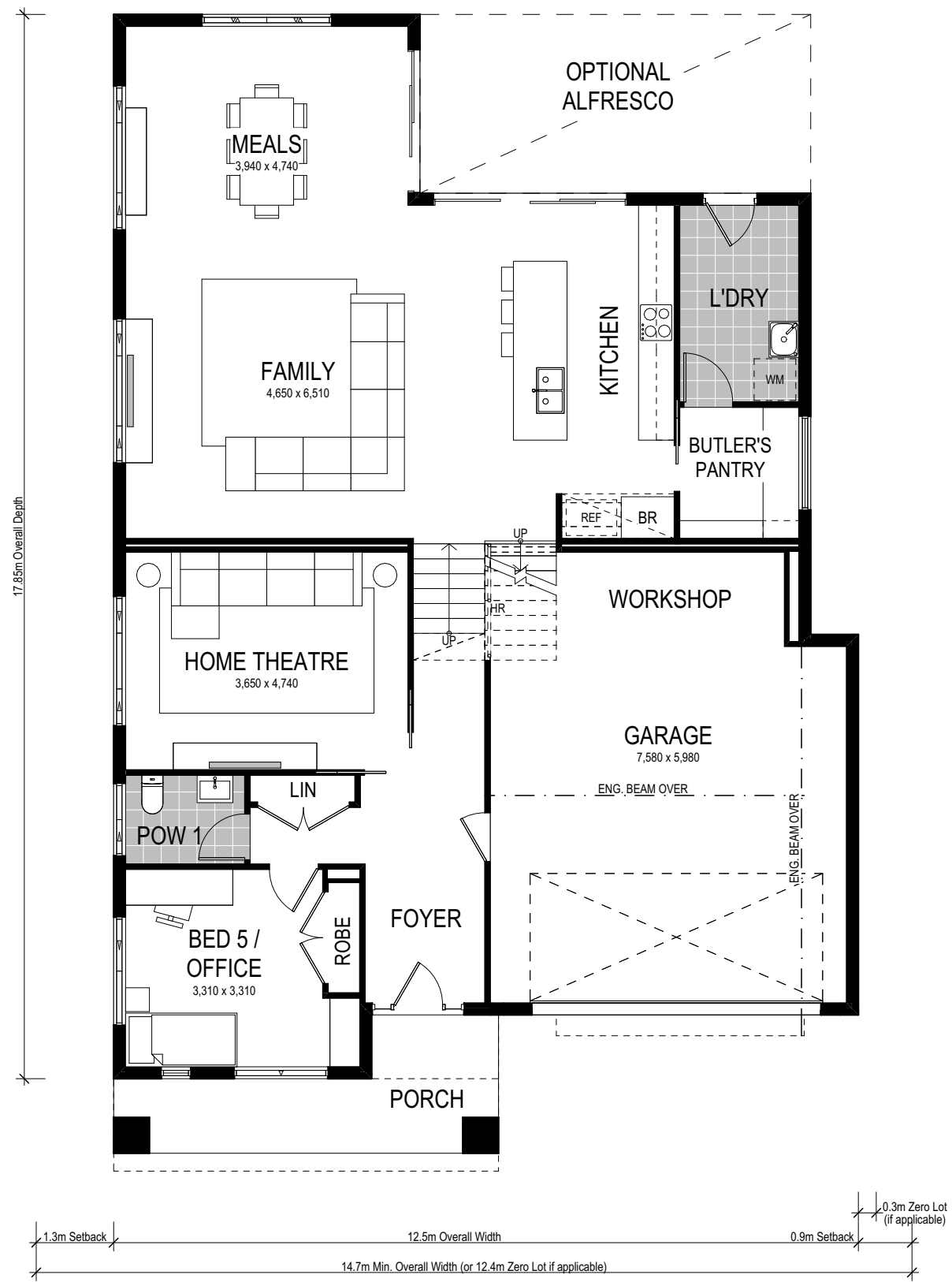
Whitehaven 306

  
5 Bed 2.5 Bath 2 Park

Our sloping site specialist techniques have been applied to our Whitehaven range to develop a stylish home for an uphill sloping site. The Whitehaven is a split level design that provides multiple living areas which makes it perfect for big families who appreciate space to retreat as well as spend time together. A brand new design by Montgomery Homes, you can be one of the first to own a stunning Whitehaven.



Option 1



Scale: 1:100. Floor plan depicts Manhattan facade.

Whitehaven 306

- 5 Bed
- 2.5 Bath
- 2 Park

This tri-level split design features five spacious bedrooms, 2.5 bathrooms and convenient internal access to the spacious garage and workshop. A generous home theatre on the lower level allows for family movie nights, with the four main bedrooms secluded on the upper level. This design benefits from generous proportions including a contemporary and functional open plan kitchen, living area and alfresco — plus, a highly sought-after Butler's pantry.

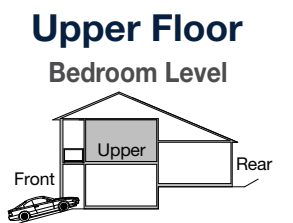
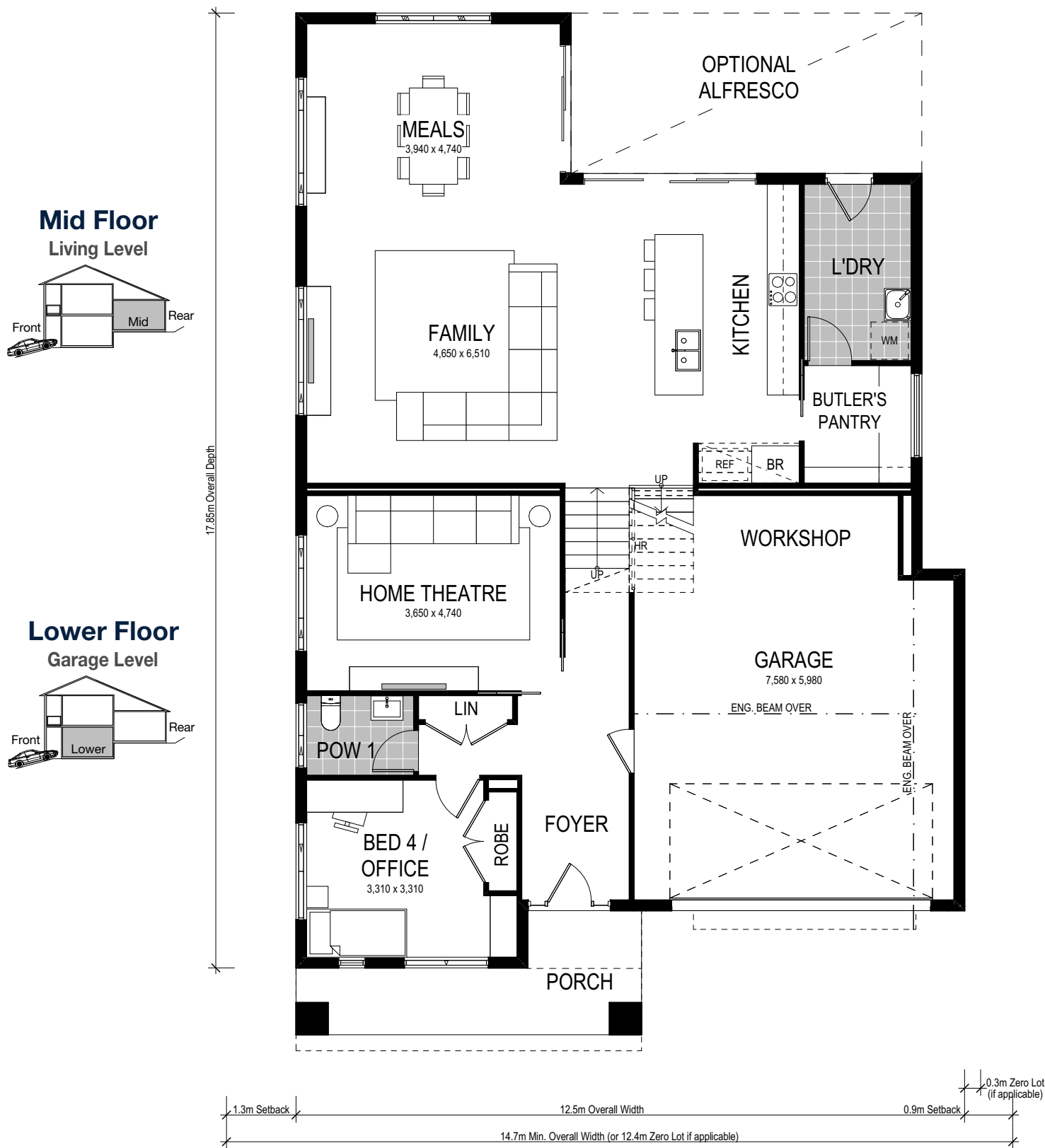
Our specially designed homes for sloping sites feature many benefits:

- ✓ Abundant natural light and air-flow
- ✓ Separate living areas on different levels
- ✓ Preserve natural drainage
- ✓ Enhance outlooks and views
- ✓ Unique and architectural looking design
- ✓ Less excavation
- ✓ A flatter driveway
- ✓ Designed to follow slope of land
- ✓ Maximise space
- ✓ Garage workshop

A Whitehaven 238 is on display at:

HomeWorld Box Hill
19 Gittel Street
Box Hill, Sydney

Option 2 Rumpus in lieu of Bedroom 4



Scale: 1:100. Floor plan depicts Manhattan facade.

Whitehaven 306

- 5 Bed
- 2.5 Bath
- 2 Park

This tri-level split design offers an alternate floorplan, featuring four spacious bedrooms, 2.5 bedrooms and the conversion of bedroom four to a rumpus room on the upper level. With convenient internal access to the spacious garage and workshop, this design also features a generous home theatre on the lower level – perfect for family movie nights. This design benefits from generous proportions including a contemporary and functional open plan kitchen, living area and alfresco – plus, a highly sought-after Butler’s pantry.

Our specially designed homes for sloping sites feature many benefits:

- ✓ Abundant natural light and air-flow
- ✓ Separate living areas on different levels
- ✓ Preserve natural drainage
- ✓ Enhance outlooks and views
- ✓ Unique and architectural looking design
- ✓ Less excavation
- ✓ A flatter driveway
- ✓ Designed to follow slope of land
- ✓ Maximise space
- ✓ Garage workshop

A Whitehaven 238 is on display at:


HomeWorld Box Hill
19 Gittel Street
Box Hill, Sydney

Facade options and features



Hamptons Facade


 **Roof Type**
Tiles

 **Total m²/Sq**
299.96/32.3



Retro Facade

 **Roof Type**
Colorbond

 **Total m²/Sq**
297.41/32.0




Manhattan Facade

 **Roof Type**
Colorbond

 **Total m²/Sq**
306.10/32.9




Executive Facade

 **Roof Type**
Tiles

 **Total m²/Sq**
296.20/31.9



Metro Facade

 **Roof Type**
Tiles

 **Total m²/Sq**
297.14/32.0

Note: Artist's impressions and pictures shown in this brochure may not be standard finishes – please refer to standard inclusions list for details. Photographs may depict homes from other design ranges and are used for illustrative purposes only. Manhattan, Hamptons, and Provincial facades, as well as gables, are not available for projects classified under BAL Flame Zone (BAL-FZ) due to certification complexities.

Important - please read - copyright ©



All brochures, sketches & plans, whether conceptual or architectural, that we have developed on your behalf remain the property of Montgomery Homes under copyright law & we retain & claim all rights to these plans. Despite popular belief, changing our plans by 50% or more does not avoid legal responsibility for a copyright breach.