

Facade options and features



Grande Facade

Roof Type: Tiles | Total m²/Sq: 209.18/22.5



Hamptons Facade

Roof Type: Colorbond | Total m²/Sq: 211.03/22.7



Executive Facade

Roof Type: Tiles | Total m²/Sq: 208.38/22.4



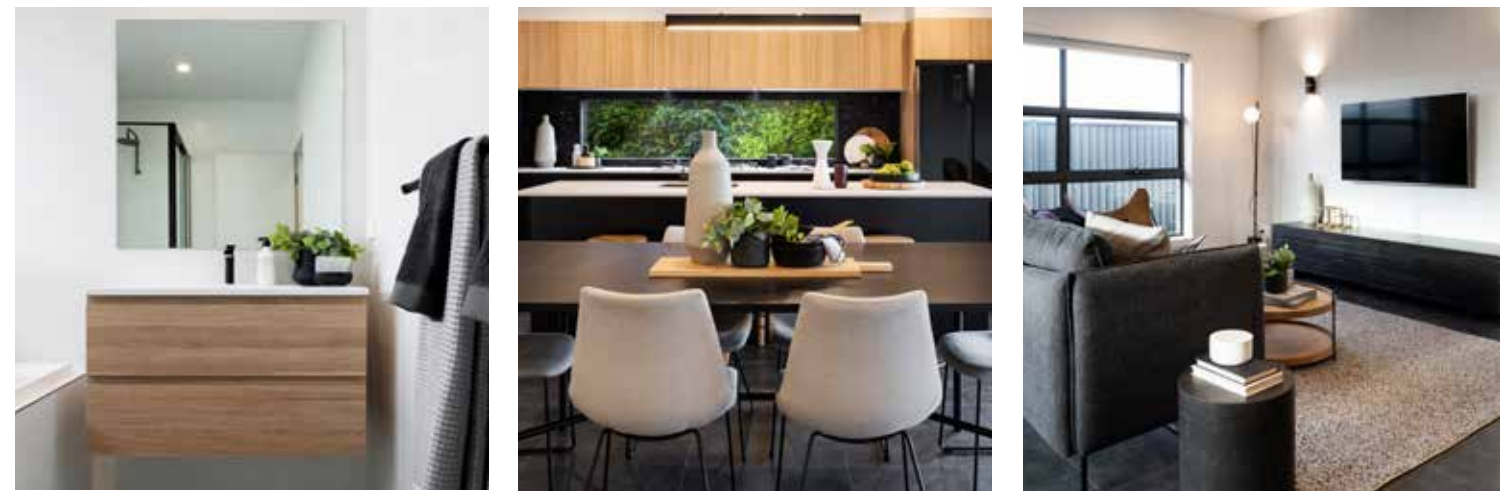
Cosmo Facade

Roof Type: Tiles | Total m²/Sq: 207.72/22.4



Metro Facade

Roof Type: Tiles | Total m²/Sq: 205.34/21.1



Note: Artist's impressions and pictures shown in this brochure may not be standard finishes – please refer to standard inclusions list for details. Photographs may depict homes from other design ranges and are used for illustrative purposes only. Manhattan, Hamptons, and Provincial facades, as well as gables, are not available for projects classified under BAL Flame Zone (BAL-FZ) due to certification complexities.

Important - please read - copyright ©

All brochures, sketches & plans, whether conceptual or architectural, that we have developed on your behalf remain the property of Montgomery Homes under copyright law & we retain & claim all rights to these plans. Despite popular belief, changing our plans by 50% or more does not avoid legal responsibility for a copyright breach.

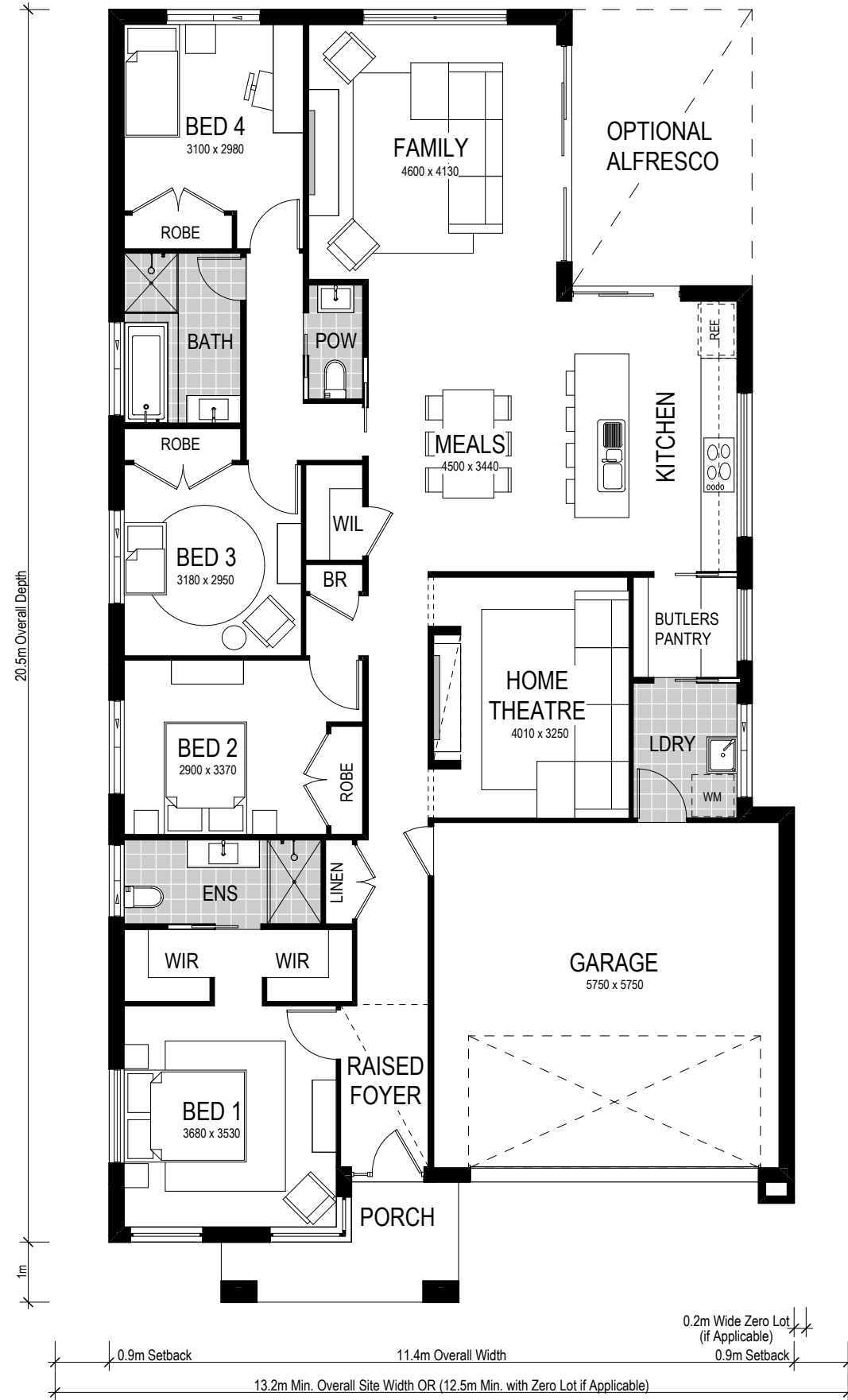


Avalon 209



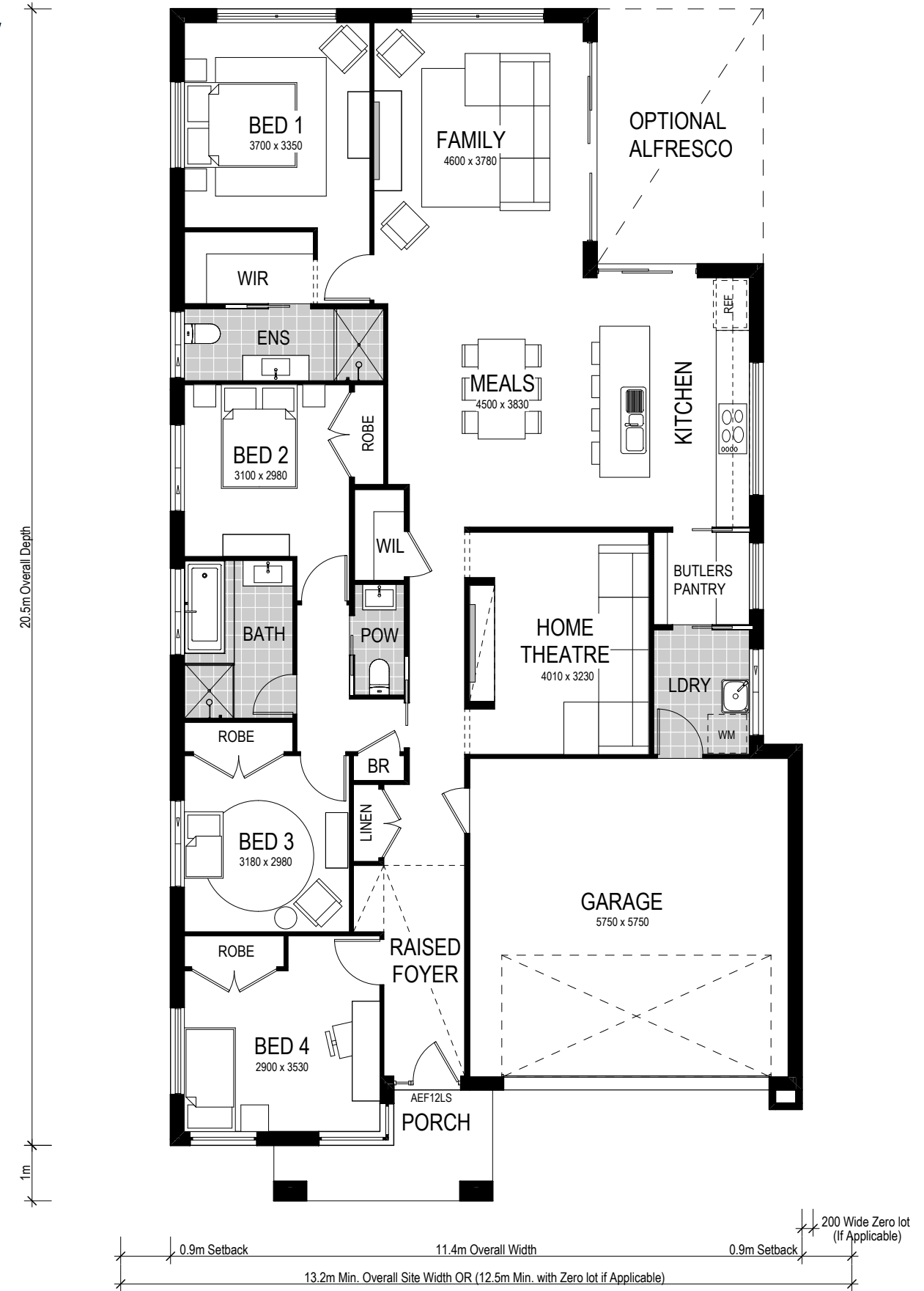
Avalon 1:

Bedroom 1 to front



Avalon 2:

Bedroom 1 to rear



Scale: 1:100. Floor plan depicts Grande facade.

Avalon 209



The Avalon 209 is a single storey design perfectly suited for level, narrow sites with a 12.5m frontage or more. The design features two living areas, including a separate home theatre room, and four bedrooms. A highlight of this home is the contemporary butler's pantry and laundry that provides ingress from the garage to the kitchen. Consider Avalon 1 or Avalon 2 layout which places the main bedroom at the front or the rear of the home.

This home comes with many great features:

- ✓ Variety of living areas
- ✓ Flexibility to adapt the floor plan
- ✓ Easy to unfold onto alfresco area
- ✓ Smart storage options
- ✓ Multiple facade options
- ✓ Butler's pantry
- ✓ Home theatre room
- ✓ Walk-in linen

An Avalon 1 209 is on display at:

HomeWorld Marsden Park
 22 Ellison Street
 Marsden Park