

# Facade options and features



**Grande Facade**

Roof Type Tiles Total m<sup>2</sup>/Sq 220.77/23.7



**Hamptons Facade**

Roof Type Tiles Total m<sup>2</sup>/Sq 220.12/23.7



**Executive Facade**

Roof Type Tiles Total m<sup>2</sup>/Sq 219.52/23.6



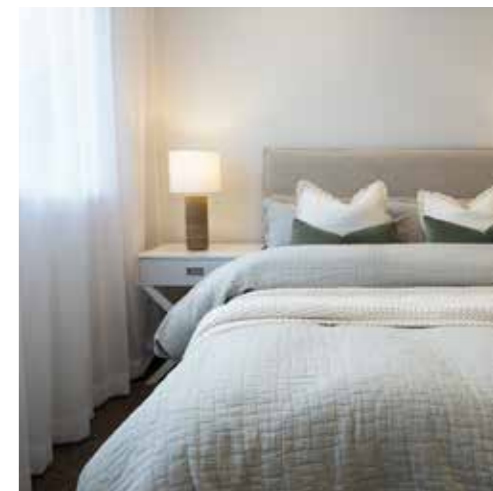
**Cosmo Facade**

Roof Type Tiles Total m<sup>2</sup>/Sq 219.29/23.6



**Metro Facade**

Roof Type Tiles Total m<sup>2</sup>/Sq 216.53/23.3



Note: Artist's impressions and pictures shown in this brochure may not be standard finishes – please refer to standard inclusions list for details. Photographs may depict homes from other design ranges and are used for illustrative purposes only. Manhattan, Hamptons, and Provincial facades, as well as gables, are not available for projects classified under BAL Flame Zone (BAL-FZ) due to certification complexities.

Important - please read - copyright ©

All brochures, sketches & plans, whether conceptual or architectural, that we have developed on your behalf remain the property of Montgomery Homes under copyright law & we retain & claim all rights to these plans. Despite popular belief, changing our plans by 50% or more does not avoid legal responsibility for a copyright breach.

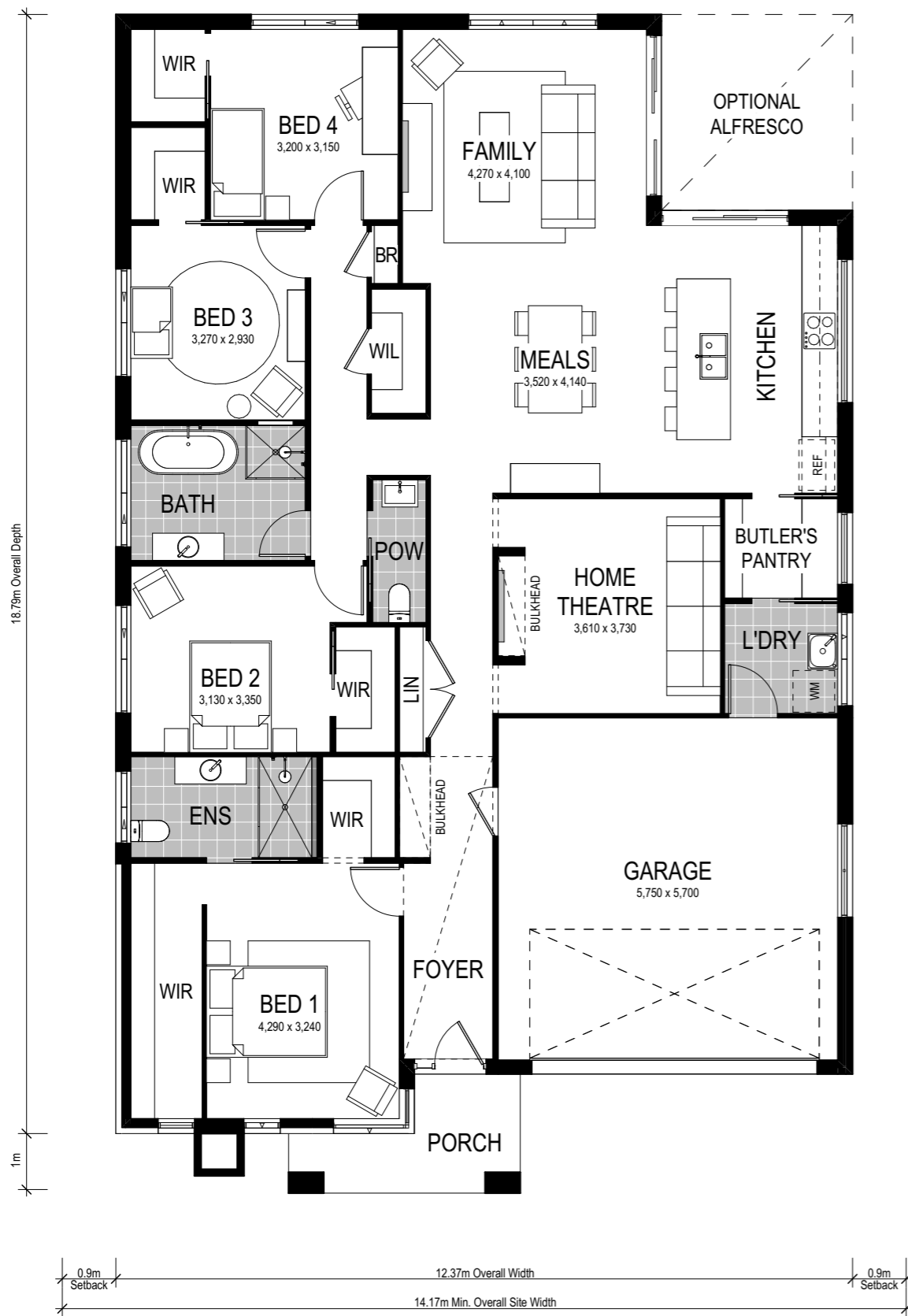


# Avalon 220



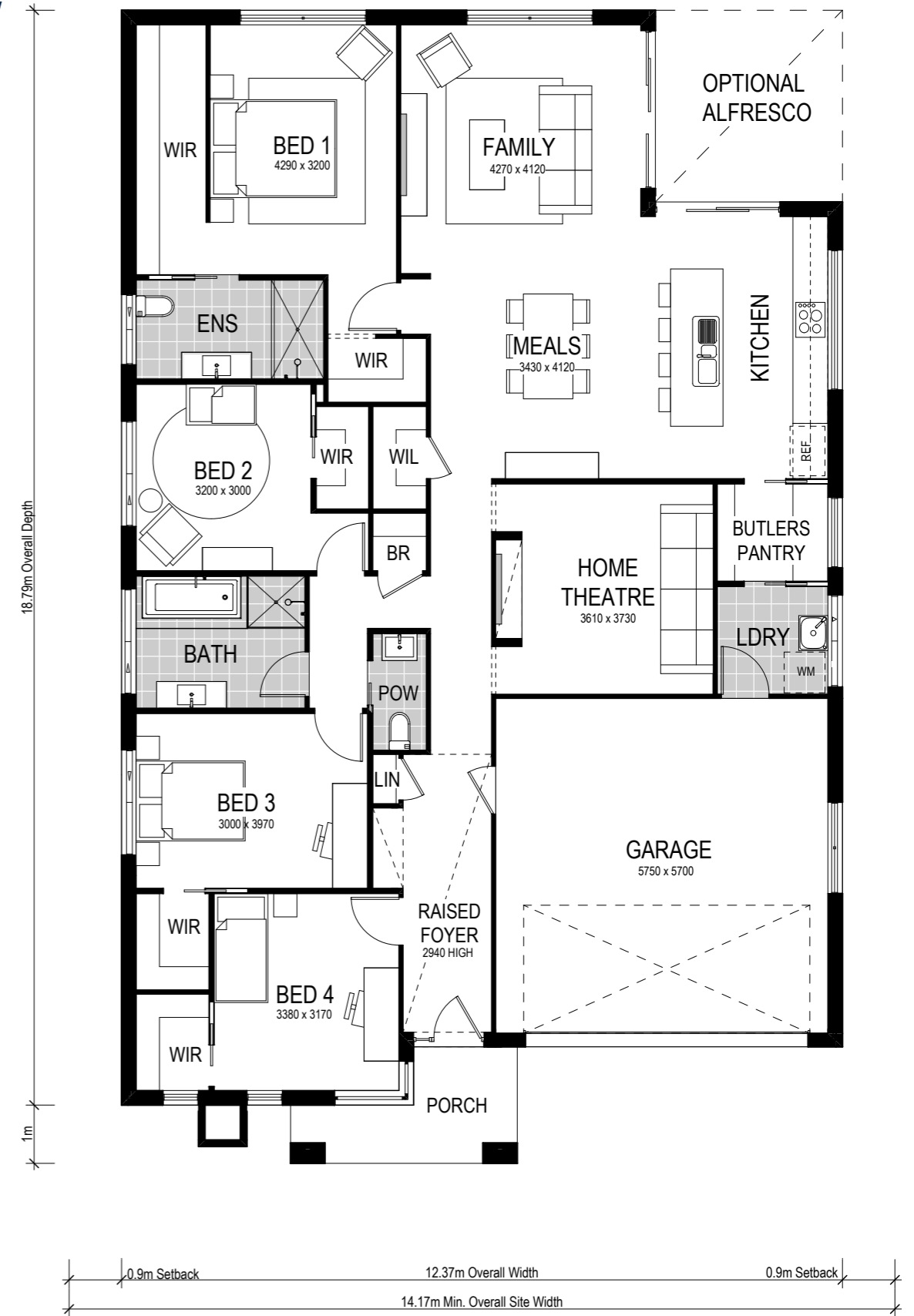
**Avalon 1:**

**Bedroom 1 to front**



**Avalon 2:**

**Bedroom 1 to rear**



Scale: 1:100. Floor plan depicts Grande facade.

*Avalon 220*

-  4 Bed
-  2 Bath
-  2 Park

The Avalon 220 is a single storey design perfectly suited for level sites with a 14.17m frontage or wider. The design features two living areas, including a separate home theatre room, and four bedrooms. A highlight of this home is the contemporary Butler's pantry and laundry that provides ingress from the garage to the kitchen. Consider Avalon 1 or Avalon 2 layout which places the main bedroom at the front or the rear of the home.

This home comes with many great features:

- ✓ Variety of living areas
- ✓ Flexibility to adapt the floor plan
- ✓ Easy to unfold on to alfresco area
- ✓ Smart storage options
- ✓ Multiple facade options
- ✓ Butler's pantry
- ✓ Walk-in linen
- ✓ Home theatre room

An Avalon 2 220 is on display at:

 **Huntlee**  
7 Peachy Avenue  
North Rothbury