

Facade options and features



Grande Facade

Roof Type: Tiles
Total m²/Sq: 249.48/26.9



Hamptons Facade

Roof Type: Tiles
Total m²/Sq: 248.80/26.8



Executive Facade

Roof Type: Tiles
Total m²/Sq: 248.24/26.7



Cosmo Facade

Roof Type: Tiles
Total m²/Sq: 248.06/26.7



Metro Facade

Roof Type: Tiles
Total m²/Sq: 244.98/26.4



Note: Artist's impressions and pictures shown in this brochure may not be standard finishes – please refer to standard inclusions list for details. Photographs may depict homes from other design ranges and are used for illustrative purposes only. Manhattan, Hamptons, and Provincial facades, as well as gables, are not available for projects classified under BAL Flame Zone (BAL-FZ) due to certification complexities.

Important - please read - copyright ©

All brochures, sketches & plans, whether conceptual or architectural, that we have developed on your behalf remain the property of Montgomery Homes under copyright law & we retain & claim all rights to these plans. Despite popular belief, changing our plans by 50% or more does not avoid legal responsibility for a copyright breach.

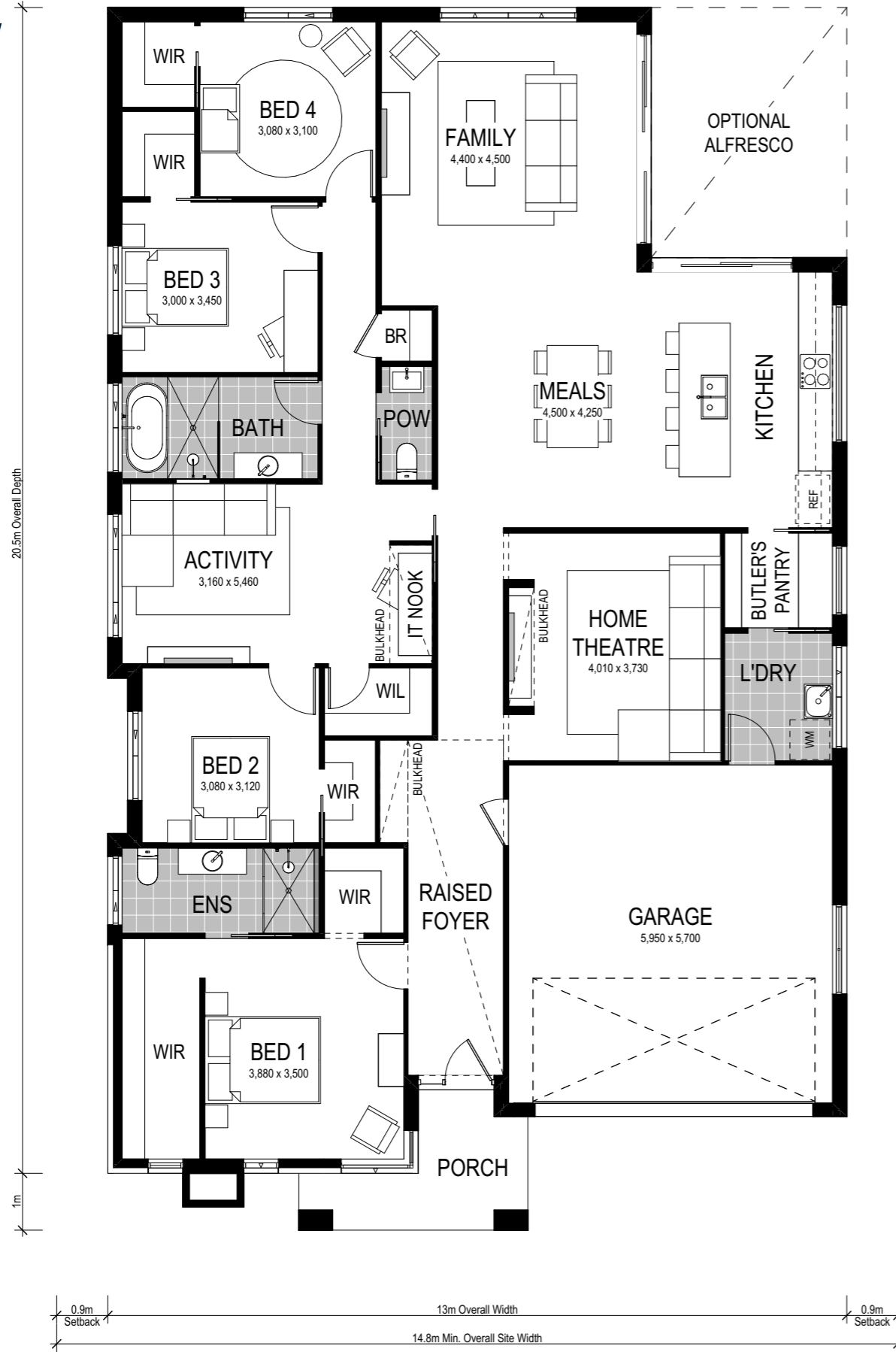


Avalon 249



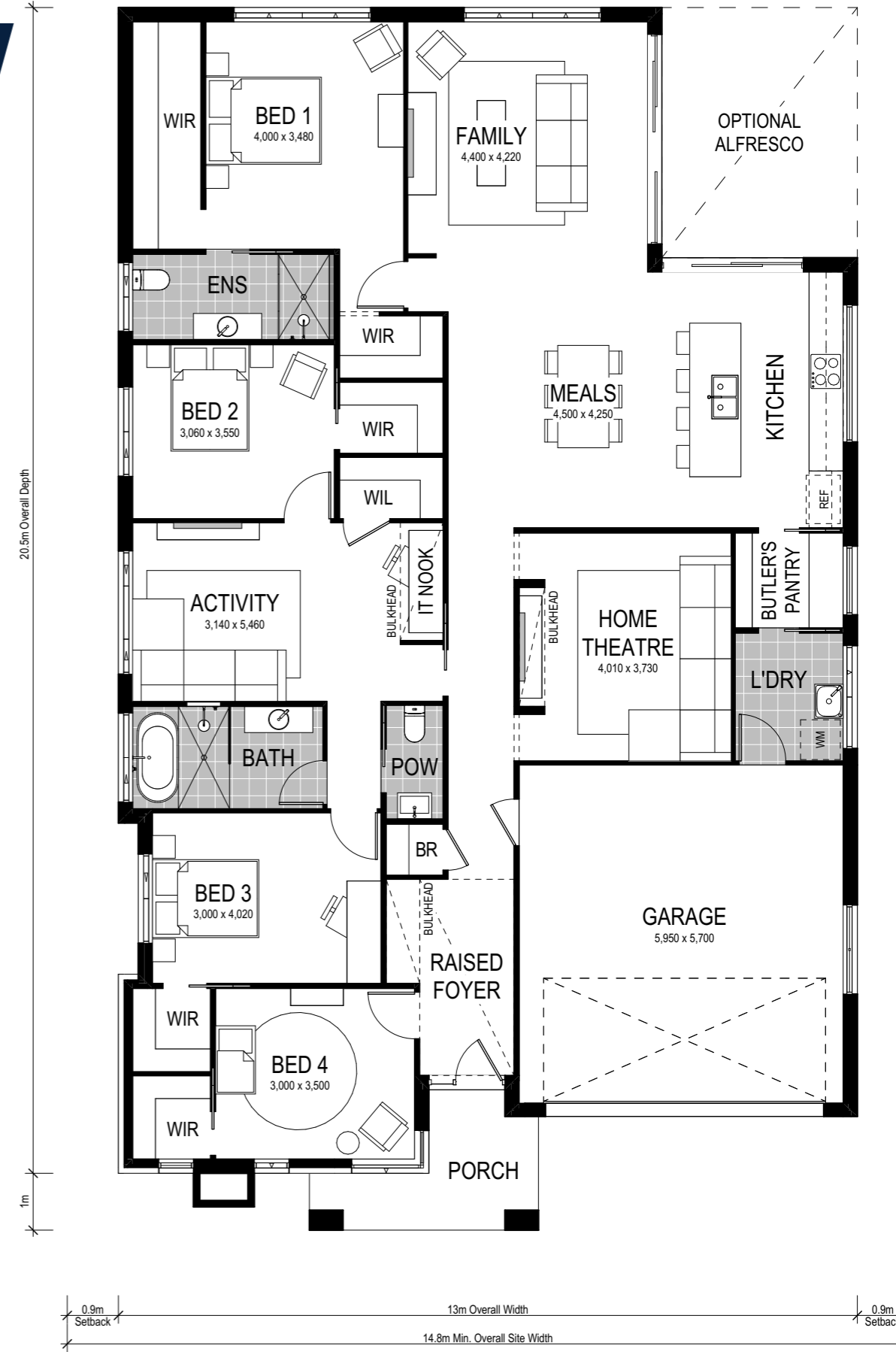
Option 1:

Bedroom 1 to front



Option 2:

Bedroom 1 to rear



Scale: 1:100. Floor plan depicts Grande facade.


Avalon 249

-  4 Bed
-  2 Bath
-  2 Park

The Avalon 249 is a single storey design perfectly suited for level sites with a 14.8m frontage or wider. The design features three living areas, including a separate home theatre room, and four sizeable bedrooms. A highlight of this home is the contemporary Butler's pantry and laundry that provides ingress from the garage to the kitchen. Consider Avalon 1 or Avalon 2 layout which places the main bedroom at the front or the rear of the home.

This home comes with many great features:

- ✓ Variety of open plan living areas
- ✓ Flexibility to adapt the floor plan
- ✓ Easy to unfold onto alfresco area
- ✓ Smart storage options
- ✓ Multiple facade options
- ✓ Butler's pantry
- ✓ Walk-in robe in every bedroom
- ✓ IT/study nook
- ✓ Home theatre

An Avalon 2 249 is on display at:
 **Hereford Hill, Lochinvar**
15 Tillage Drive
Lochinvar