



MONTGOMERY
HOMES





Brighton 229





Brighton 229

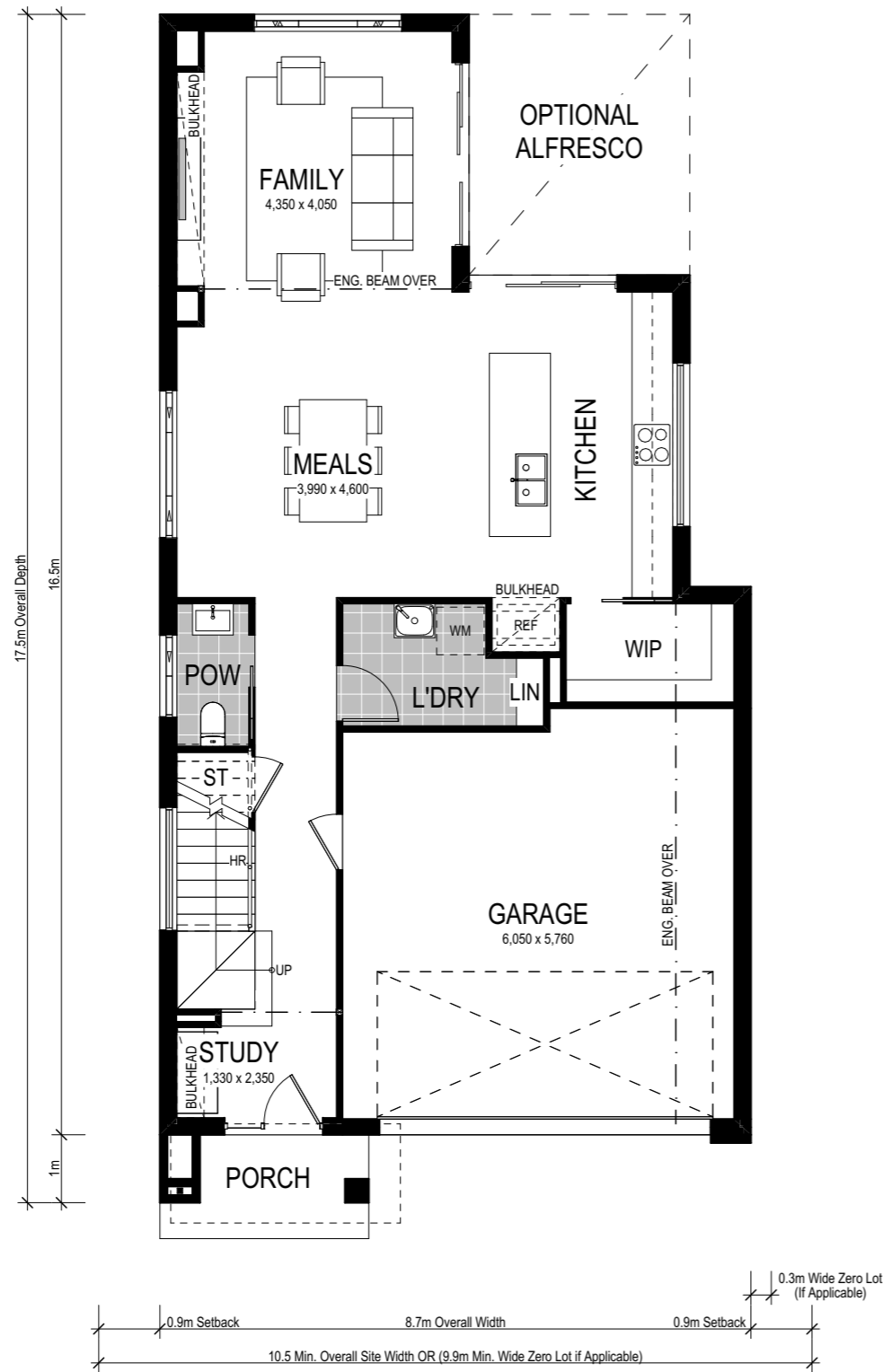
  
4 Bed 2.5 Bath 2 Park

The stylish and practical Brighton 229 has been designed to suit level, narrow sites with a 10.9m overall width (or 10.3m with zero lot setback). A two-storey house design providing four spacious bedrooms and multiple living spaces, the Brighton 229 exemplifies the juncture of modern family living meets entertainers' dream.

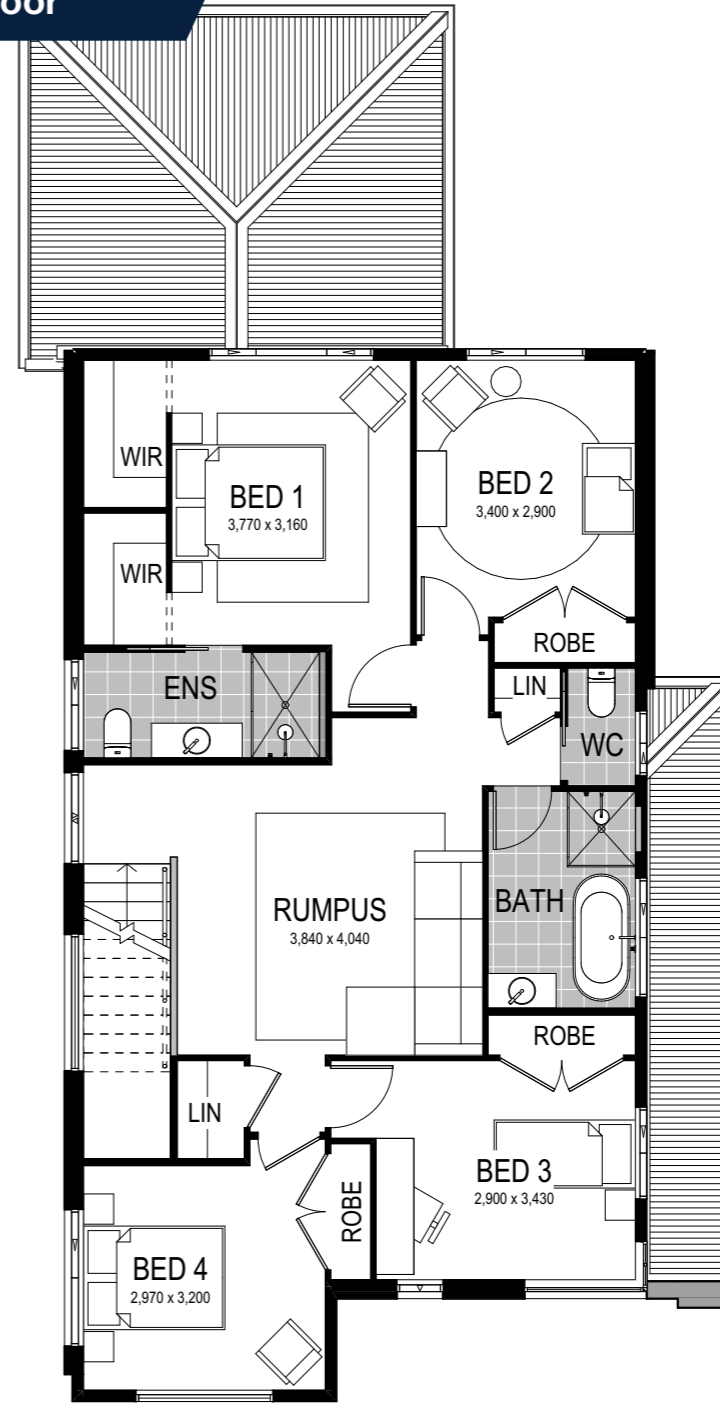


Option 1

Lower Floor






Upper Floor



Scale: 1:100. Floor plan depicts Retro facade.

Brighton 229

-  4 Bed
-  2.5 Bath
-  2 Park

Entering through a stunning porch, journey along a generous hallway passing the study, a well-appointed laundry and powder room. Upon arrival to the main living space, be inspired by an open plan kitchen, meals and family space and walk-in pantry, with adjoining alfresco. Family living is redefined on the upper level, with the master bedroom, ensuite with dual walk-in robe, three spacious bedrooms and main bathroom surrounding the rumpus room.

This home comes with many great features:

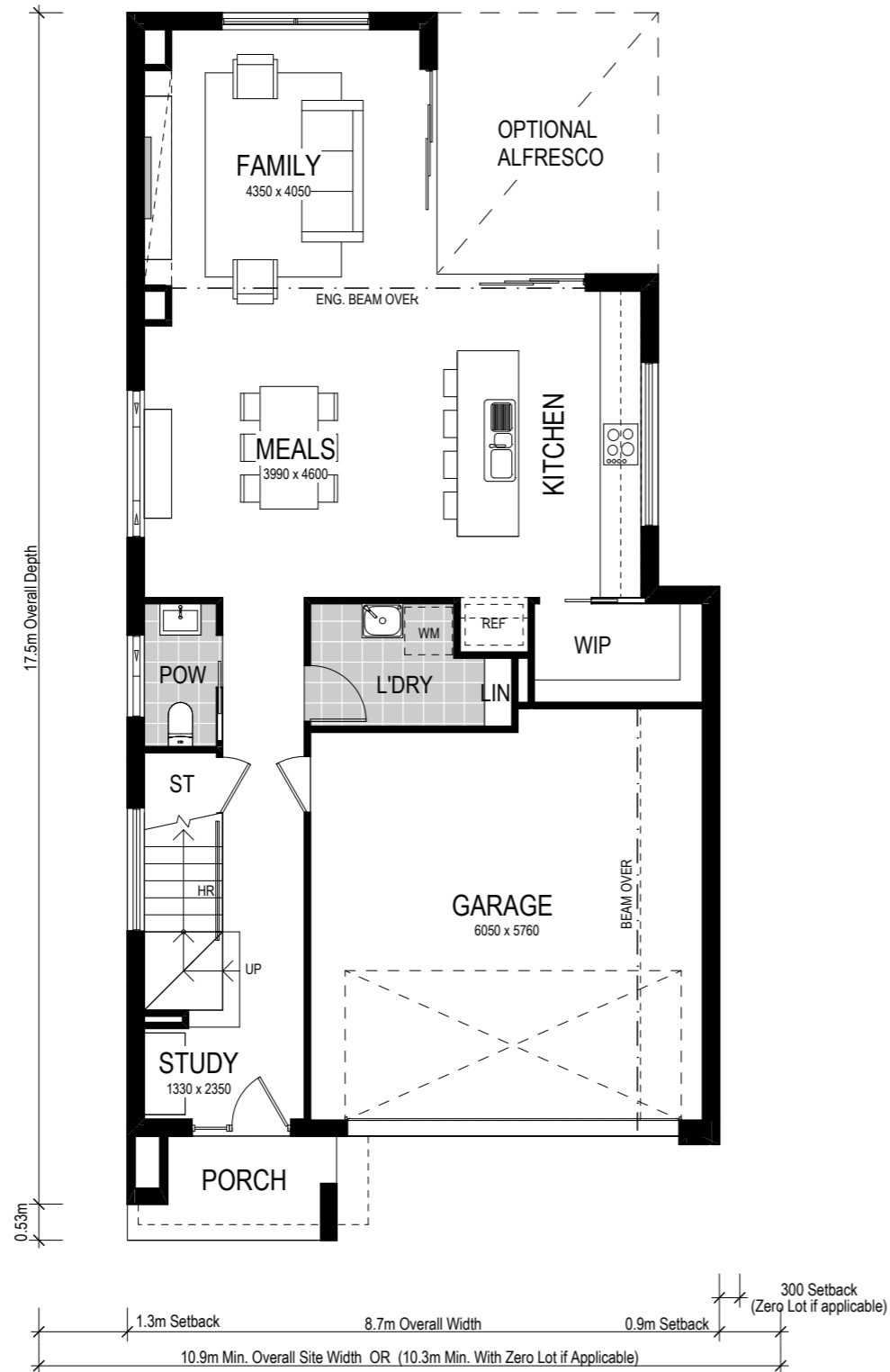
- ✓ Variety of living areas
- ✓ Flexibility to adapt the floor plan
- ✓ Multiple facade options
- ✓ Easy to unfold onto alfresco area
- ✓ Walk-in pantry
- ✓ Study nook
- ✓ Rumpus room
- ✓ Under-stair storage

This home is on display at:

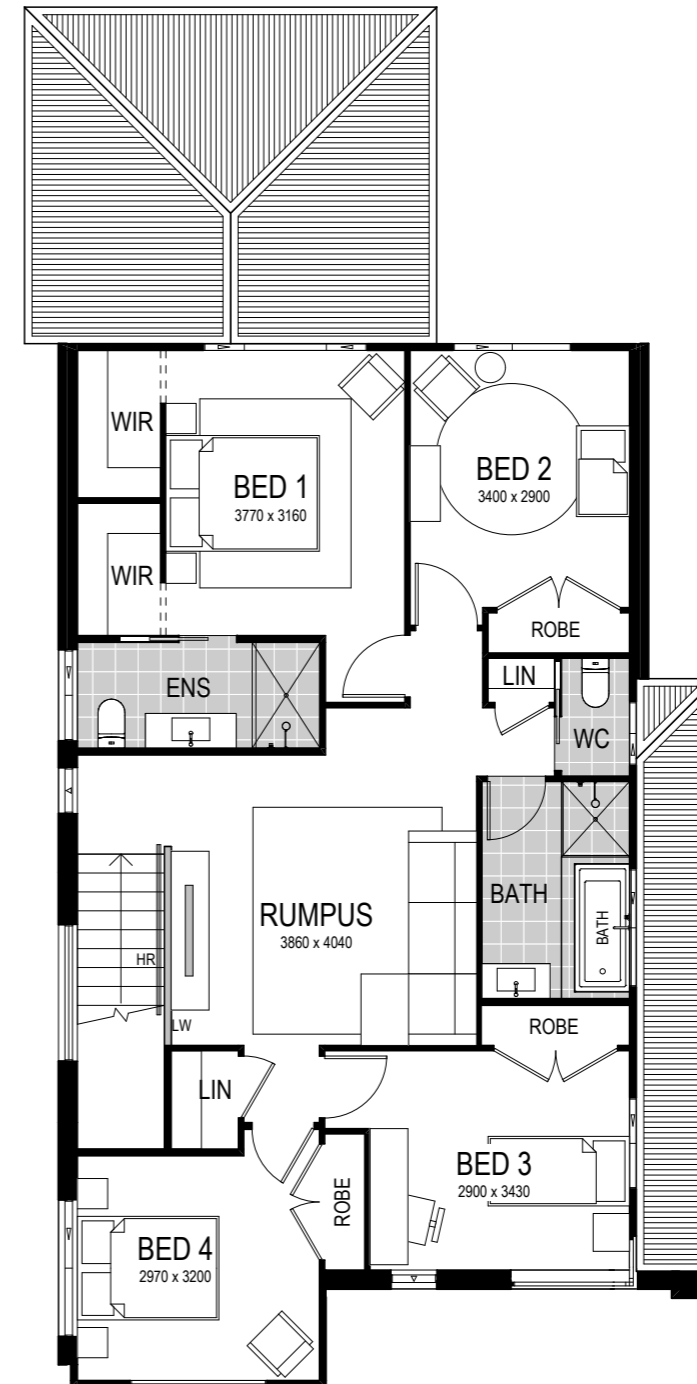
 **HomeWorld Marsden Park**
22 Ellison Street
Marsden Park

Option 2: Double stacker corner door

Lower Floor



Upper Floor



Scale: 1:100. Floor plan depicts Hamptons facade.

Brighton 229



4 Bed 2.5 Bath 2 Park

With the same spacious two-storey bedroom and living space floorplan, family living is ignited in the Brighton 229 with this alternate upgrade option. This floor plan includes the luxurious addition of double stacker corner doors to the alfresco — adding extra dimension to your living space and seamlessly connecting the inside to the out.

This home comes with many great features:

- ✓ Variety of living areas
- ✓ Flexibility to adapt the floor plan
- ✓ Multiple facade options
- ✓ Easy to unfold onto alfresco area
- ✓ Walk-in pantry
- ✓ Study nook
- ✓ Rumpus room
- ✓ Under-stair storage

This home is on display at:

HomeWorld Marsden Park
22 Ellison Street
Marsden Park

Facade options and features



Hamptons Facade

 **Roof Type**
Colorbond

 **Total m²/Sq**
226.23/24.3



Metro Facade


 **Roof Type**
Tiles

 **Total m²/Sq**
228.65/24.6



Retro Facade

 **Roof Type**
Colorbond

 **Total m²/Sq**
229.02/24.7



Vogue Facade

 **Roof Type**
Colorbond

 **Total m²/Sq**
229.02/24.7

Note: Artist's impressions and pictures shown in this brochure may not be standard finishes – please refer to standard inclusions list for details. Photographs may depict homes from other design ranges and are used for illustrative purposes only. Manhattan, Hamptons, and Provincial facades, as well as gables, are not available for projects classified under BAL Flame Zone (BAL-FZ) due to certification complexities.

Important - please read - copyright ©

All brochures, sketches & plans, whether conceptual or architectural, that we have developed on your behalf remain the property of Montgomery Homes under copyright law & we retain & claim all rights to these plans. Despite popular belief, changing our plans by 50% or more does not avoid legal responsibility for a copyright breach.

