

Facade options and features



Grande Facade Roof Type Colorbond Total m²/Sq 354.65/38.2



Hamptons Facade Roof Type Tiles Total m²/Sq 354.01/38.1



Retro Facade Roof Type Colorbond Total m²/Sq 353.21/38.0



Executive Facade Roof Type Tiles Total m²/Sq 353.63/38.0



Cosmo Facade Roof Type Tiles Total m²/Sq 353.07/38.0



Metro Facade Roof Type Tiles Total m²/Sq 348.73/37.5



Note: Artist's impressions and pictures shown in this brochure may not be standard finishes – please refer to standard inclusions list for details. Photographs may depict homes from other design ranges and are used for illustrative purposes only. Manhattan, Hamptons, and Provincial facades, as well as gables, are not available for projects classified under BAL Flame Zone (BAL-FZ) due to certification complexities.

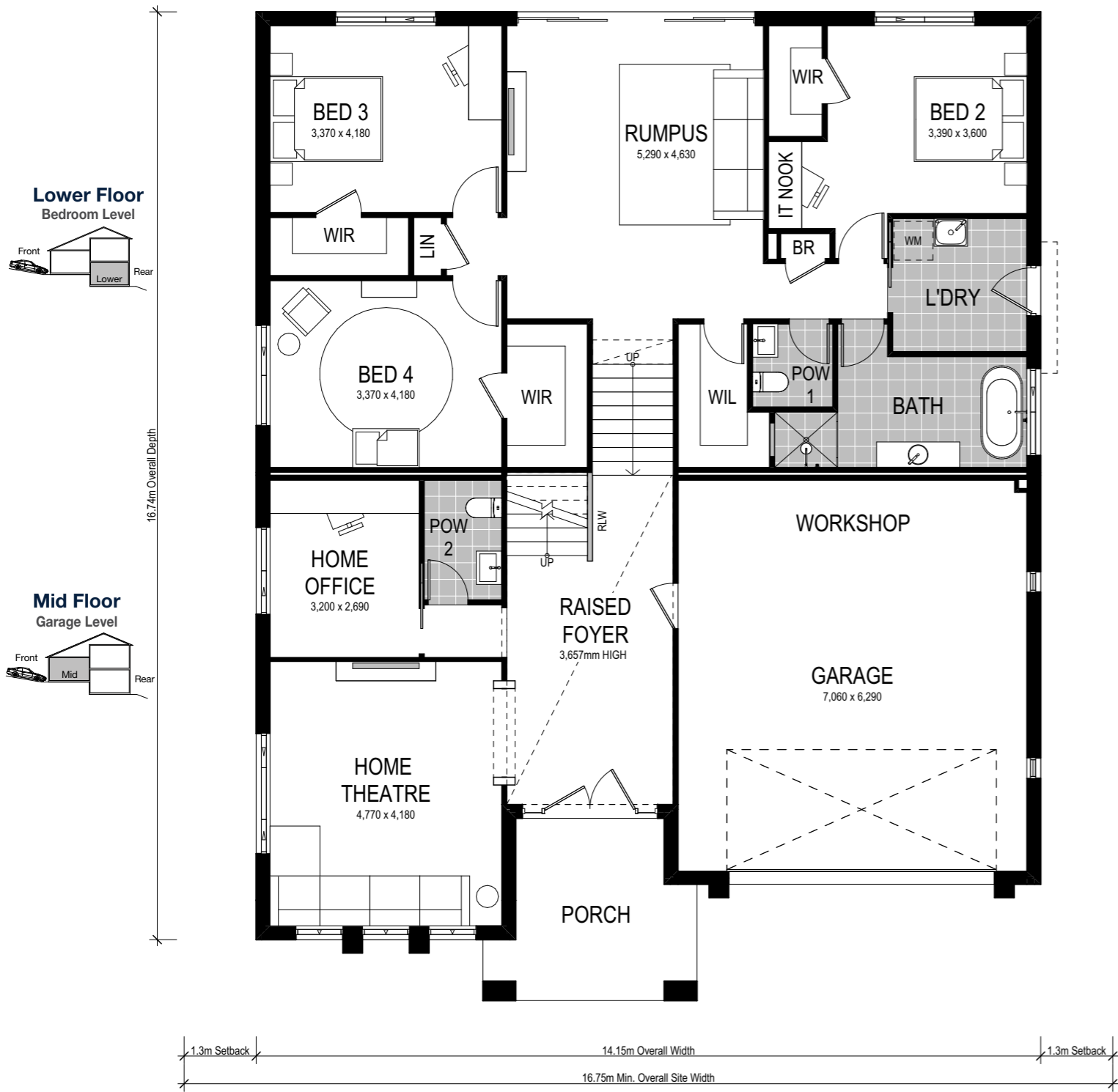
Important - please read - copyright ©

All brochures, sketches & plans, whether conceptual or architectural, that we have developed on your behalf remain the property of Montgomery Homes under copyright law & we retain & claim all rights to these plans. Despite popular belief, changing our plans by 50% or more does not avoid legal responsibility for a copyright breach.

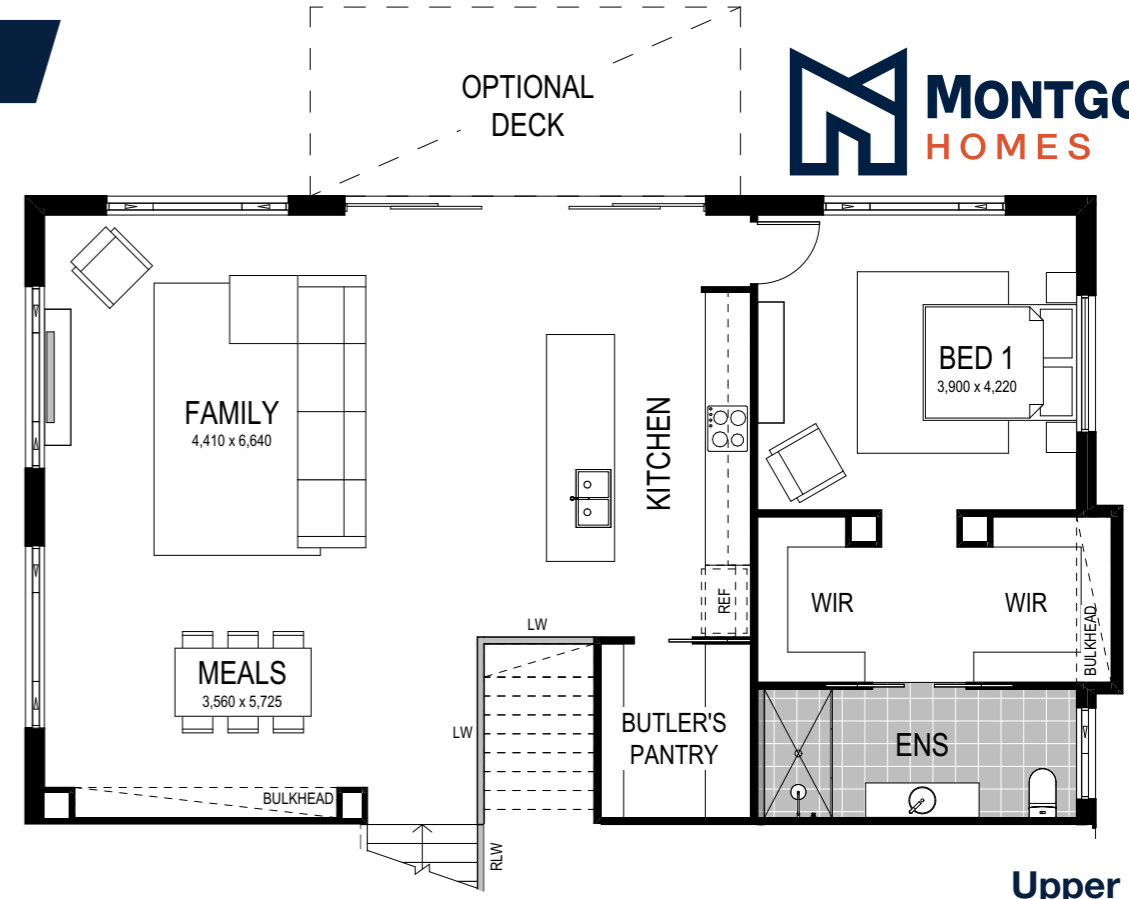


Carolina 1 354

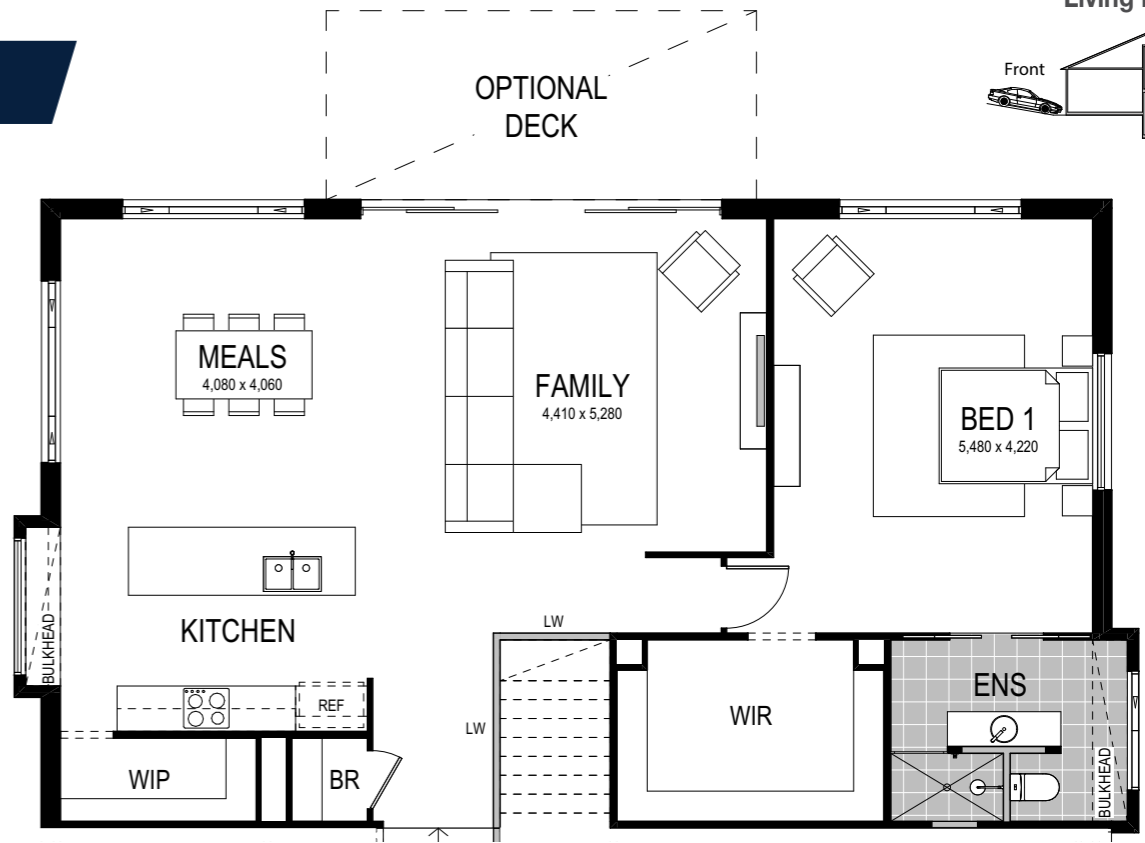




Option 1



Option 2



Scale: 1:100. Floor plan depicts Grande facade.

Carolina 1354

- 4 Bed
- 2.5 Bath
- 2 Park

The Carolina 1 354 is a split-level slab design crafted especially for a downhill sloping site. Met with a stunning porch, enter on the mid-level alongside a generous home theatre, study, powder room and internal access to the extra-large garage and workshop. Ascending to the upper level, take your pick from two floor plans, each featuring an open-plan kitchen and living space and luxurious master bedroom with walk-in-robe and ensuite. The lower level defines family living with the laundry, main bathroom, three bedrooms — each with walk-in-robies, and a spacious rumpus room.

Our specially designed split-level homes for sloping sites feature many benefits:

- ✓ Abundant natural light and air-flow
- ✓ Separate living areas on different levels
- ✓ Preserve natural drainage
- ✓ Enhance outlooks and views
- ✓ Unique and architectural looking design
- ✓ Less excavation
- ✓ A flatter driveway
- ✓ Designed to follow slope of land
- ✓ Maximise space
- ✓ Garage workshop