

Facade options and features



Manhattan Facade

Roof Type
Colorbond

Total m²/Sq
254.56/27.4



Executive Facade

Roof Type
Colorbond/Tiles

Total m²/Sq
249.18/26.8



Hamptons Facade

Roof Type
Tiles

Total m²/Sq
250.51/26.9



Metro Facade

Roof Type
Colorbond/Tiles

Total m²/Sq
245.52/26.4



Note: Artist's impressions and pictures shown in this brochure may not be standard finishes – please refer to standard inclusions list for details. Photographs may depict homes from other design ranges and are used for illustrative purposes only. Manhattan, Hamptons, and Provincial facades, as well as gables, are not available for projects classified under BAL Flame Zone (BAL-FZ) due to certification complexities.

Important - please read - copyright ©

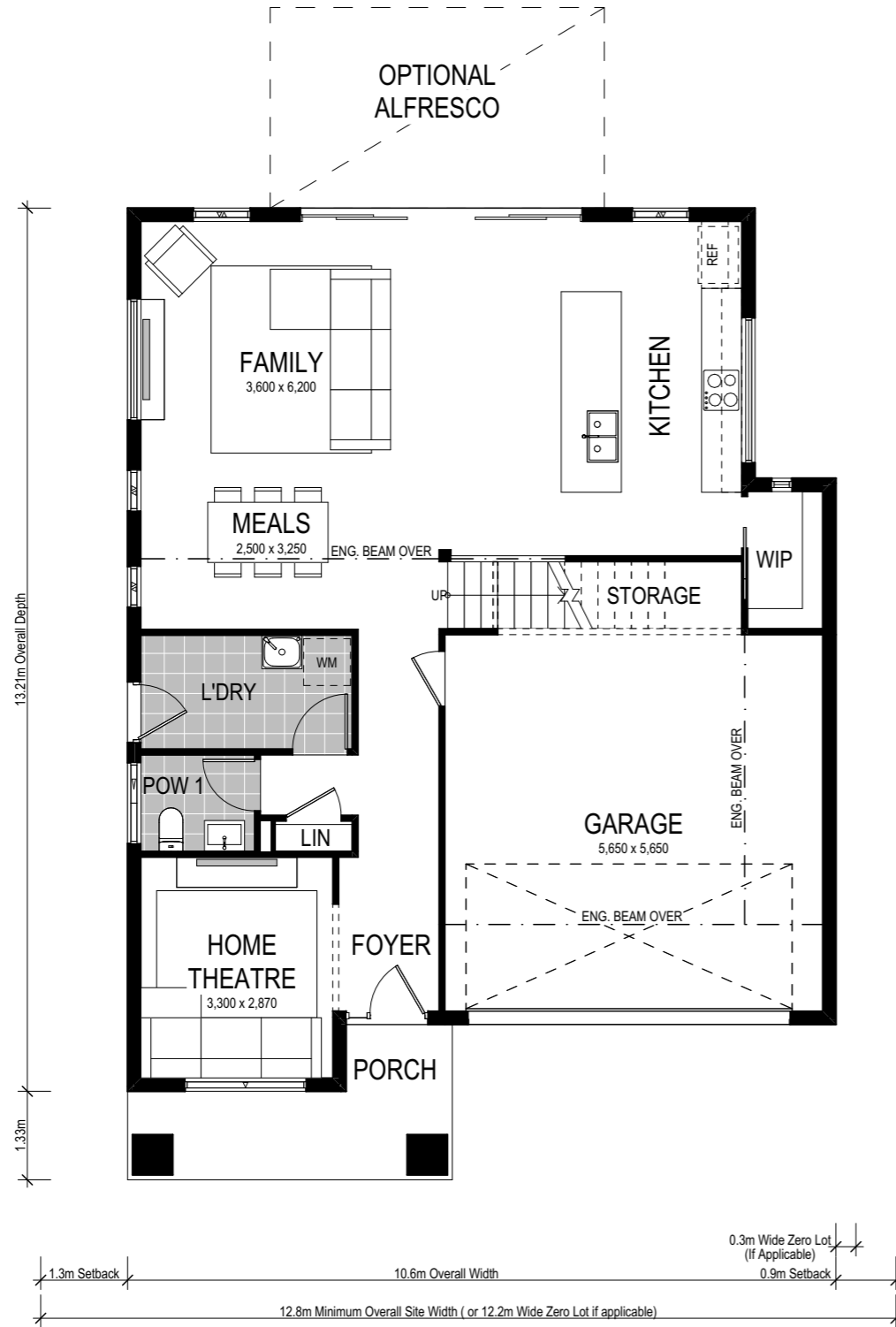
All brochures, sketches & plans, whether conceptual or architectural, that we have developed on your behalf remain the property of Montgomery Homes under copyright law & we retain & claim all rights to these plans. Despite popular belief, changing our plans by 50% or more does not avoid legal responsibility for a copyright breach.



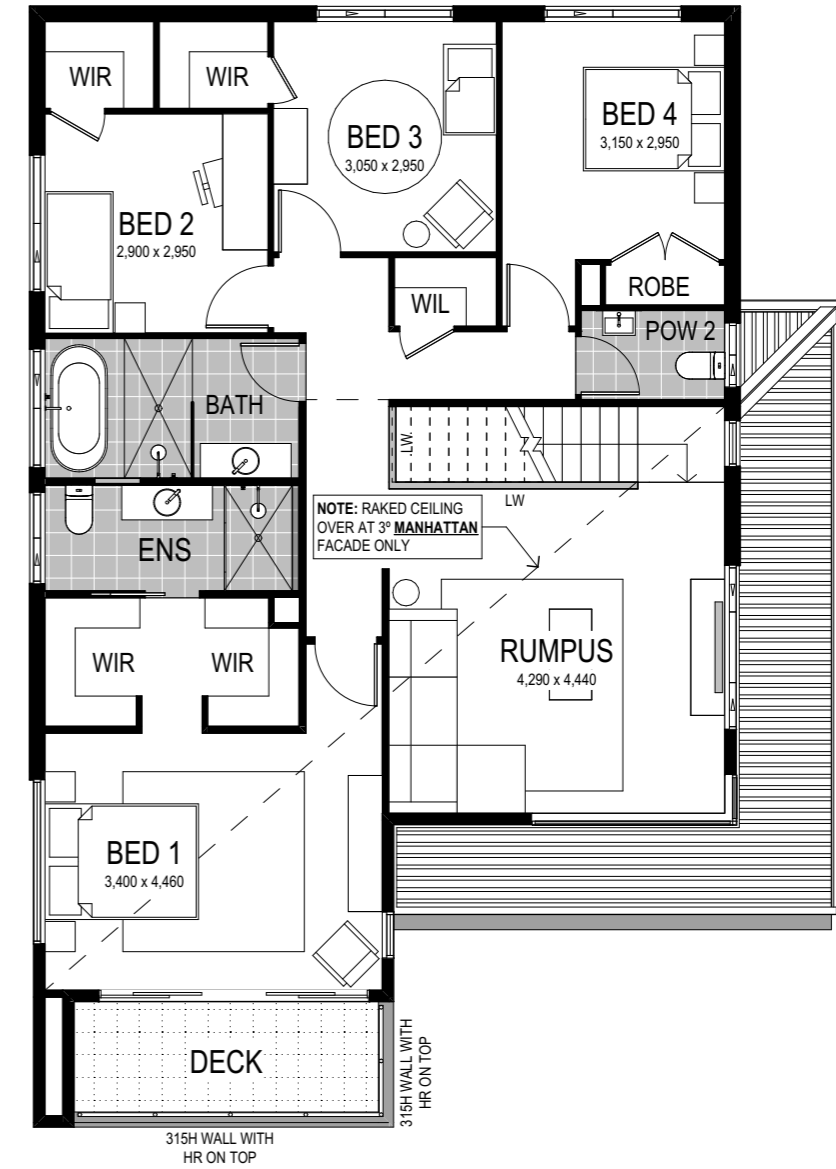
Cayman 255



Lower Floor



Upper Floor



Scale: 1:100. Floor plan depicts Manhattan facade.

Cayman 255



4 Bed 2.5 Bath 2 Park

The Cayman is a cutting edge, brand new design to our range of two storey homes. This new design has been cleverly designed to suit narrow lots, yet the spacious layout boasts three different living areas, four bedrooms and a contemporary Butler's pantry, making it perfect for families who appreciate space to retreat as well as spend time together.

This home comes with many great features:

- ✓ Variety of living areas
- ✓ Multiple facade options
- ✓ Easy to unfold onto alfresco area
- ✓ Walk-in pantry
- ✓ Home theatre
- ✓ Rumpus room
- ✓ Walk-in linen
- ✓ Under stair storage