

# Facade options and features



**Manhattan Facade**

Roof Type: Colorbond  
Total m<sup>2</sup>/Sq: 348.90/37.6



**Executive Facade**

Roof Type: Colorbond/Tiles  
Total m<sup>2</sup>/Sq: 344.14/37.0



**Hamptons Facade**

Roof Type: Tiles  
Total m<sup>2</sup>/Sq: 345.13/37.1



**Metro Facade**

Roof Type: Colorbond/Tiles  
Total m<sup>2</sup>/Sq: 340.52/36.7



Note: Artist's impressions and pictures shown in this brochure may not be standard finishes – please refer to standard inclusions list for details. Photographs may depict homes from other design ranges and are used for illustrative purposes only. Manhattan, Hamptons, and Provincial facades, as well as gables, are not available for projects classified under BAL Flame Zone (BAL-FZ) due to certification complexities.

Important - please read - copyright ©

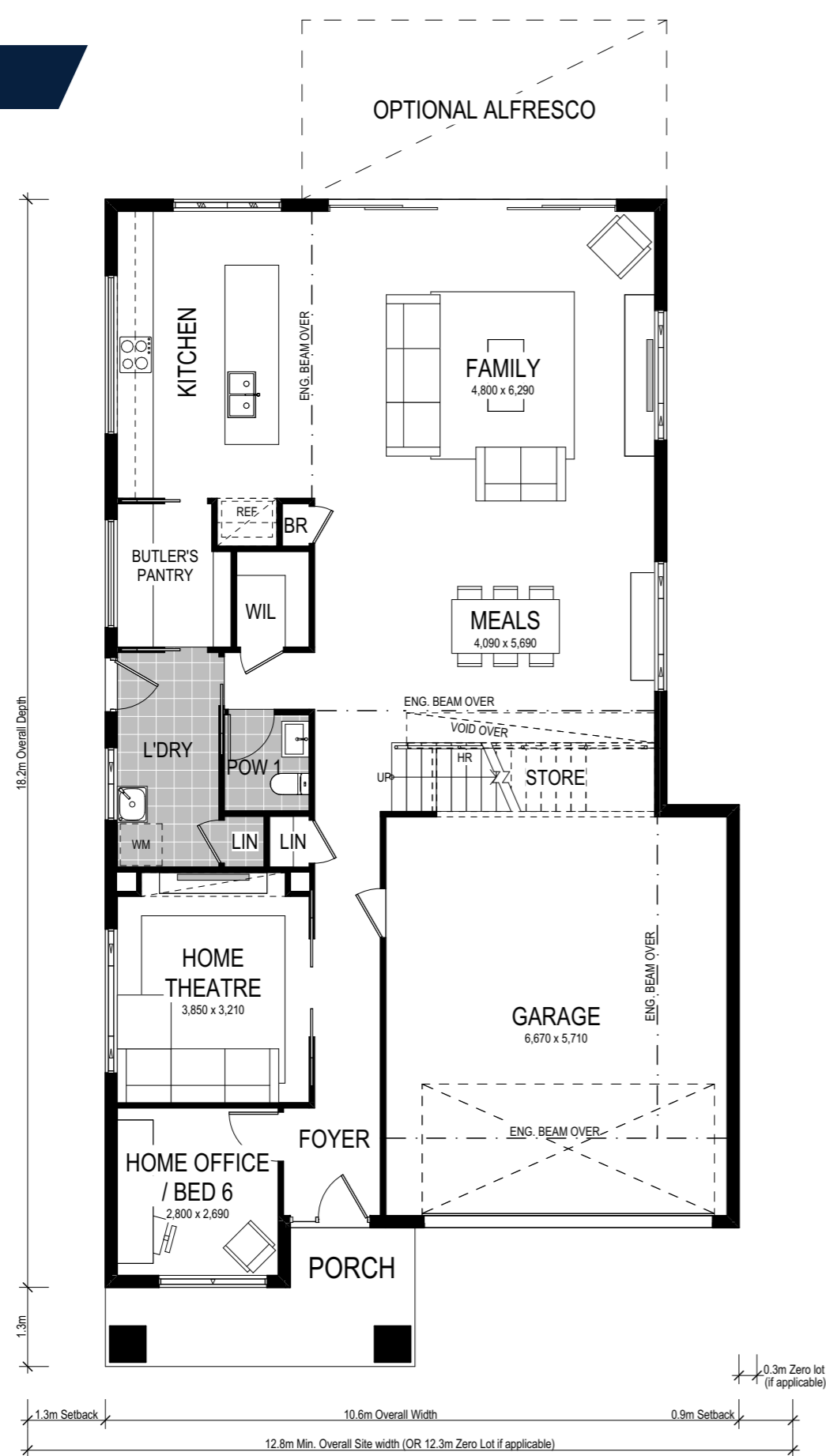
All brochures, sketches & plans, whether conceptual or architectural, that we have developed on your behalf remain the property of Montgomery Homes under copyright law & we retain & claim all rights to these plans. Despite popular belief, changing our plans by 50% or more does not avoid legal responsibility for a copyright breach.



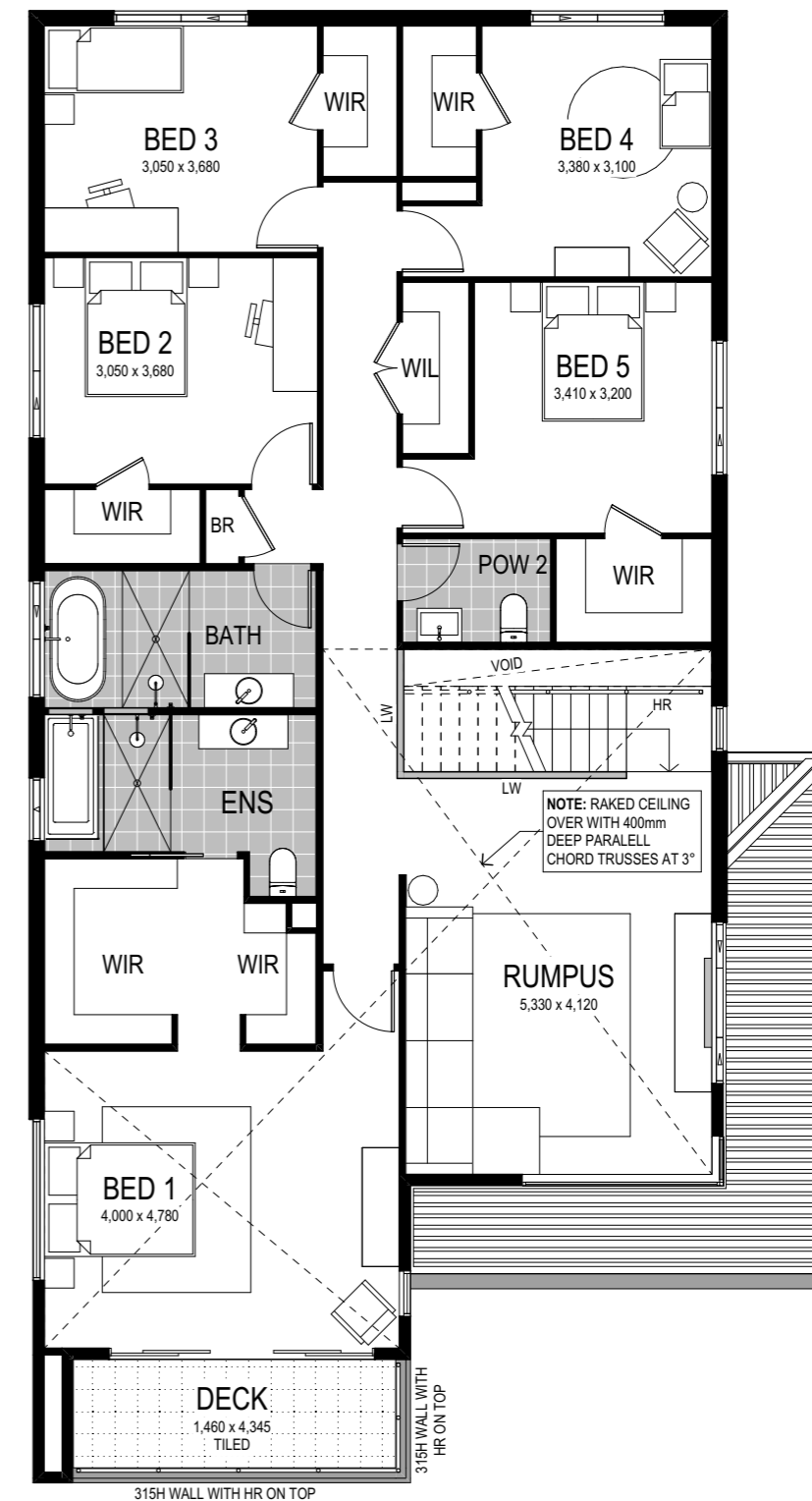
# Cayman 349



## Lower Floor



## Upper Floor



Scale: 1:100. Floor plan depicts Manhattan facade.

# Cayman 349



6 Bed 2.5 Bath 2 Park

The Cayman 349 is a cutting edge, new design to our range of two storey homes. This design has been cleverly designed to suit narrow lots, yet the spacious layout boasts three different living areas, six bedrooms and a contemporary Butler's pantry, making it perfect for families who appreciate space to retreat as well as spend time together.

This home comes with many great features:

- ✓ Variety of open plan living areas
- ✓ Multiple facade options
- ✓ Easy to unfold onto alfresco area
- ✓ Home office/study
- ✓ Butler's pantry
- ✓ Home theatre
- ✓ Rumpus room
- ✓ Walk-in linen
- ✓ Under stair storage