

Facade options and features



Grande Facade

Roof Type: Colorbond
Total m²/Sq: 320.78/34.5



Hamptons Facade

Roof Type: Tiles
Total m²/Sq: 342.35/36.8



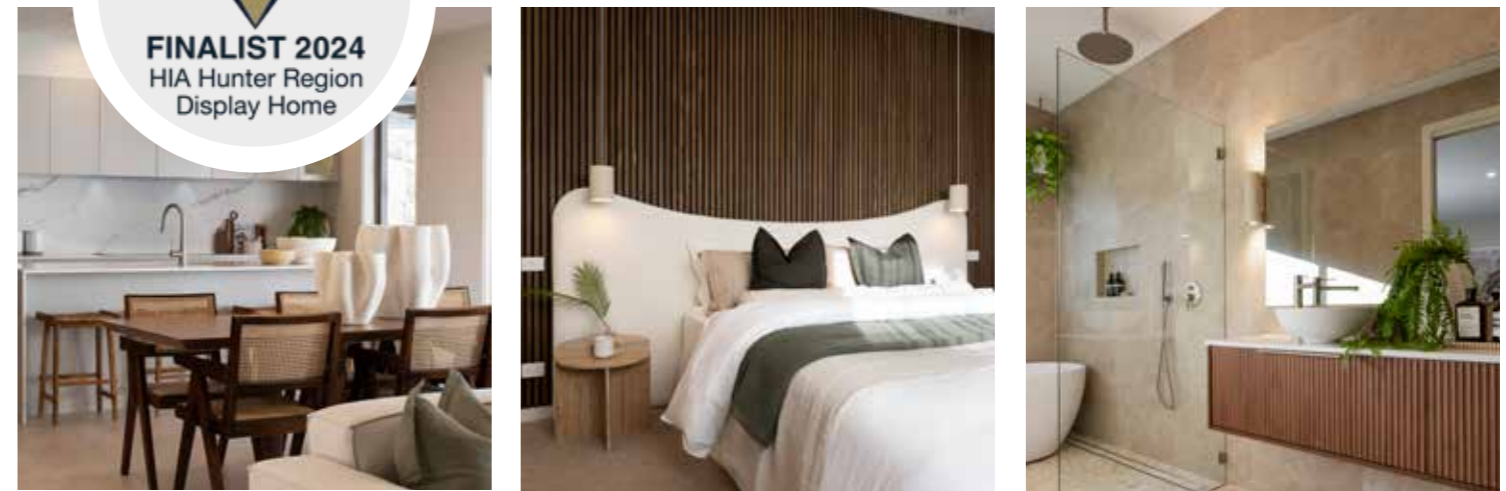
Executive Facade

Roof Type: Tiles
Total m²/Sq: 318.01/34.2

Note: Artist's impressions and pictures shown in this brochure may not be standard finishes – please refer to standard inclusions list for details. Photographs may depict homes from other design ranges and are used for illustrative purposes only. Manhattan, Hamptons, and Provincial facades, as well as gables, are not available for projects classified under BAL Flame Zone (BAL-FZ) due to certification complexities.

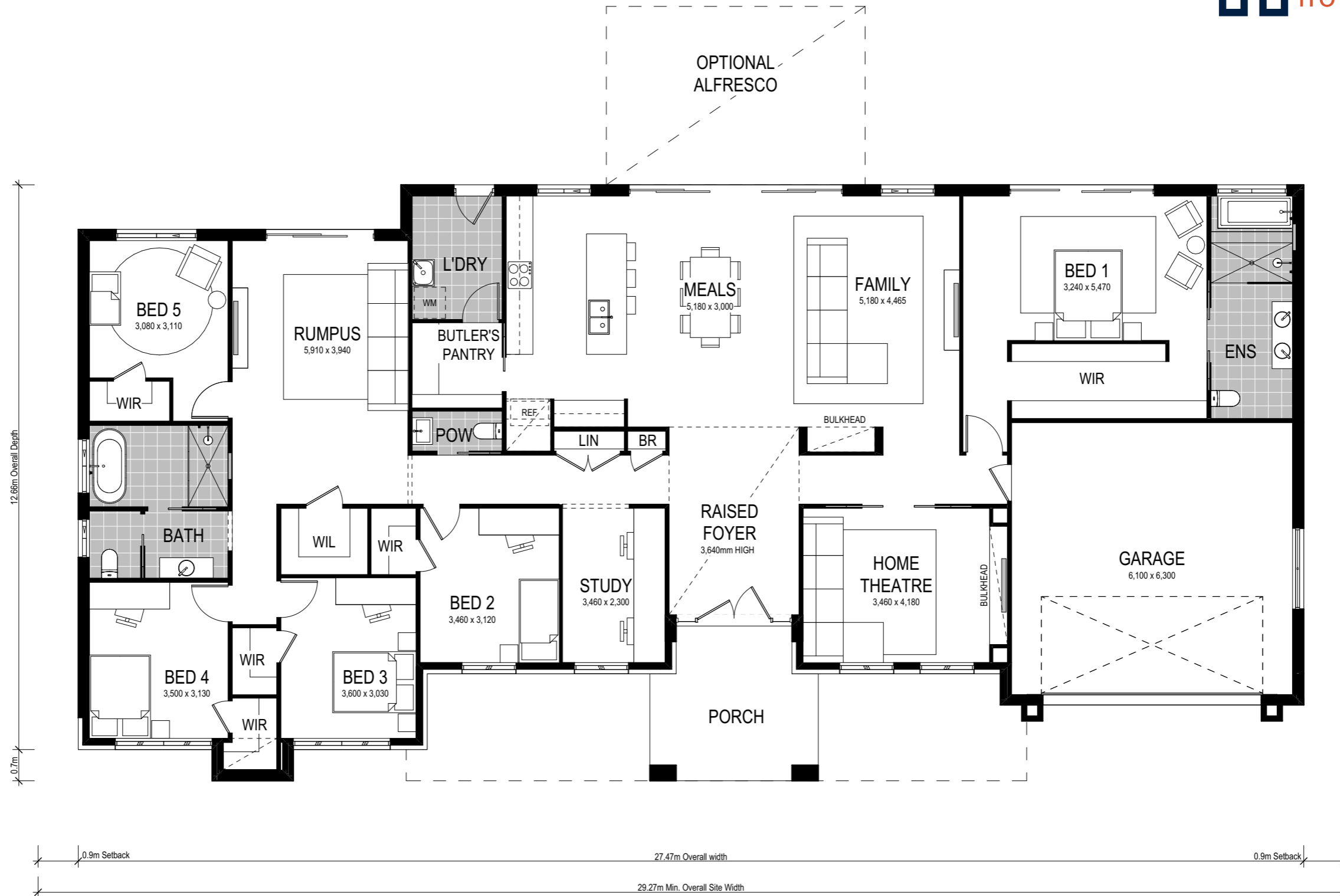


Important - please read - copyright ©
All brochures, sketches & plans, whether conceptual or architectural, that we have developed on your behalf remain the property of Montgomery Homes under copyright law & we retain & claim all rights to these plans. Despite popular belief, changing our plans by 50% or more does not avoid legal responsibility for a copyright breach.






Ridgeview 321





Scale: 1:100. Floor plan depicts Grande facade.

Ridgeview 321

-  5 Bed
-  2.5 Bath
-  2 Park

The Ridgeview 321 is a single storey design suited for an acreage site. The design features separate home theatre, study, rumpus, open plan kitchen with Butler's pantry. The luxurious master suite occupies its own wing — with an extra large walk-in robe and ensuite, parents can retreat to their own private haven. Deliberately, the other four bedrooms are located on the opposite end of the home, right next to the bathroom, study and rumpus room, where the kids can enjoy their own time and space.

This home comes with many great features:

- ✓ Multiple facade options
- ✓ Butler's pantry
- ✓ Variety of open plan living areas
- ✓ Home theatre room
- ✓ Easy to expand alfresco area
- ✓ Rumpus room
- ✓ Walk-In linen
- ✓ Extra large garage

This home is on display at:

 **HomeWorld Warnervale**
5 Turret Cct
Warnervale