

# Facade options and features



**Grande Facade**

Roof Type: Colourbond  
Total m<sup>2</sup>/Sq: 262.69/28.3



**Hamptons Facade**

Roof Type: Tiles  
Total m<sup>2</sup>/Sq: 277.28/29.8



**Executive Facade**

Roof Type: Tiles  
Total m<sup>2</sup>/Sq: 260.16/28.0



Note: Artist's impressions and pictures shown in this brochure may not be standard finishes – please refer to standard inclusions list for details. Photographs may depict homes from other design ranges and are used for illustrative purposes only. Manhattan, Hamptons, and Provincial facades, as well as gables, are not available for projects classified under BAL Flame Zone (BAL-FZ) due to certification complexities.

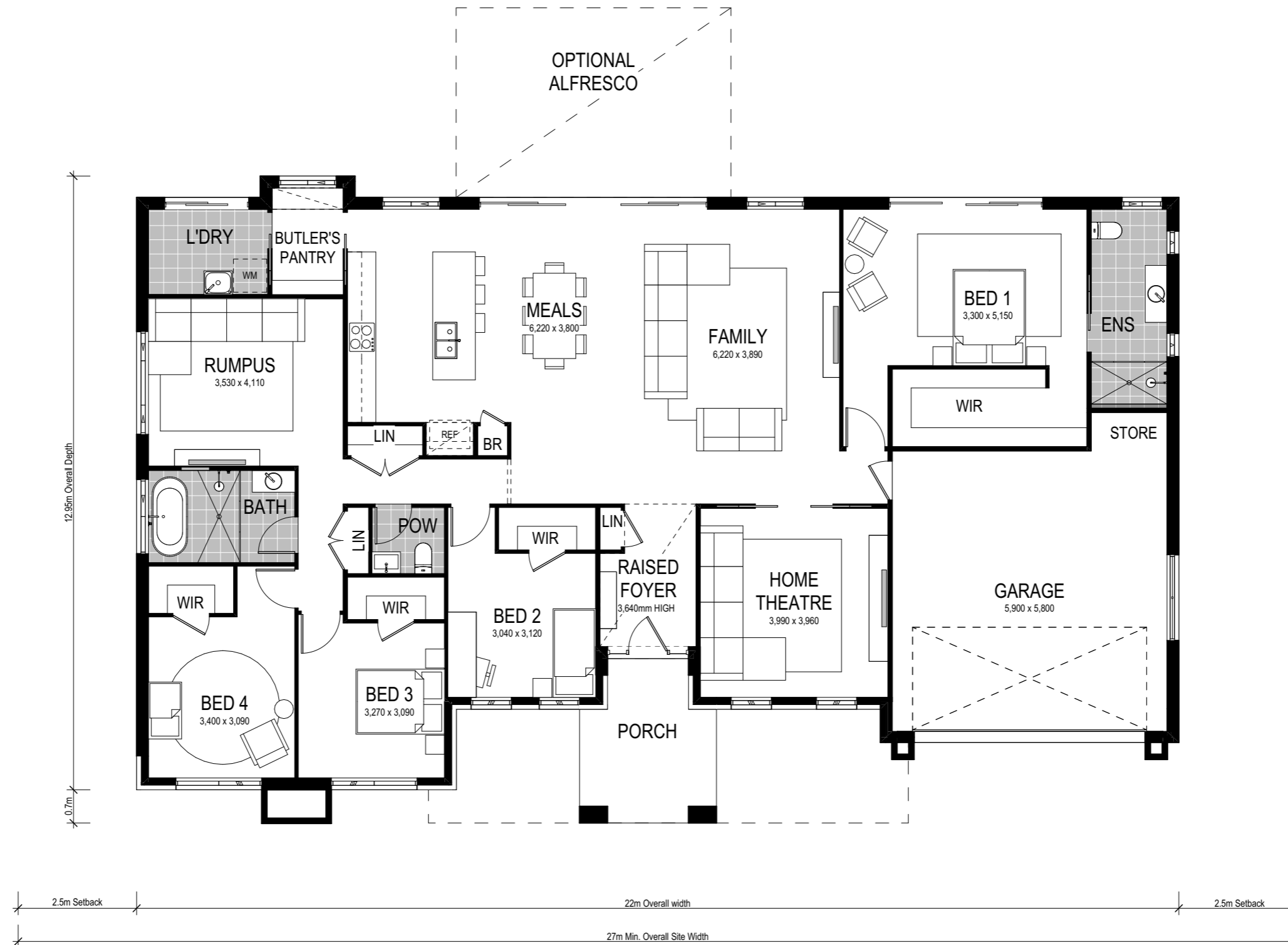
Important - please read - copyright ©

All brochures, sketches & plans, whether conceptual or architectural, that we have developed on your behalf remain the property of Montgomery Homes under copyright law & we retain & claim all rights to these plans. Despite popular belief, changing our plans by 50% or more does not avoid legal responsibility for a copyright breach.



# Ridgeview 263





Scale: 1:100. Floor plan depicts Grande facade.

# Ridgeview 263

- 4 Bed
- 2 Bath
- 2 Park

The Ridgeview 263 is a single storey homestead design that features a separate home theatre, rumpus, open plan kitchen with butler's pantry, and four bedrooms — each with their own walk-in robe. Offering a range of modern features to suit a relaxed lifestyle, our well thought out acreage homes have been designed to bring the outdoors inside, so you can enjoy the beautiful rural surroundings that a country setting has to offer.

This home comes with many great features:

- ✓ Multiple facade options
- ✓ Variety of open plan living areas
- ✓ Easy to expand alfresco area
- ✓ Walk-In robe in every bedroom
- ✓ Butler's pantry
- ✓ Home theatre
- ✓ Rumpus room
- ✓ Storage/workshop in garage

A Ridgeview 321 is on display at:

**HomeWorld Warnervale**  
5 Turret Cct  
Warnervale