

# Facade options and features



**Grande Facade**

Roof Type: Colorbond  
Total m<sup>2</sup>/Sq: 320.78/34.5



**Hamptons Facade**

Roof Type: Tiles  
Total m<sup>2</sup>/Sq: 342.35/36.8



**Executive Facade**

Roof Type: Tiles  
Total m<sup>2</sup>/Sq: 318.01/34.2

Note: Artist's impressions and pictures shown in this brochure may not be standard finishes – please refer to standard inclusions list for details. Images may depict homes from other design ranges and are used for illustrative purposes only.



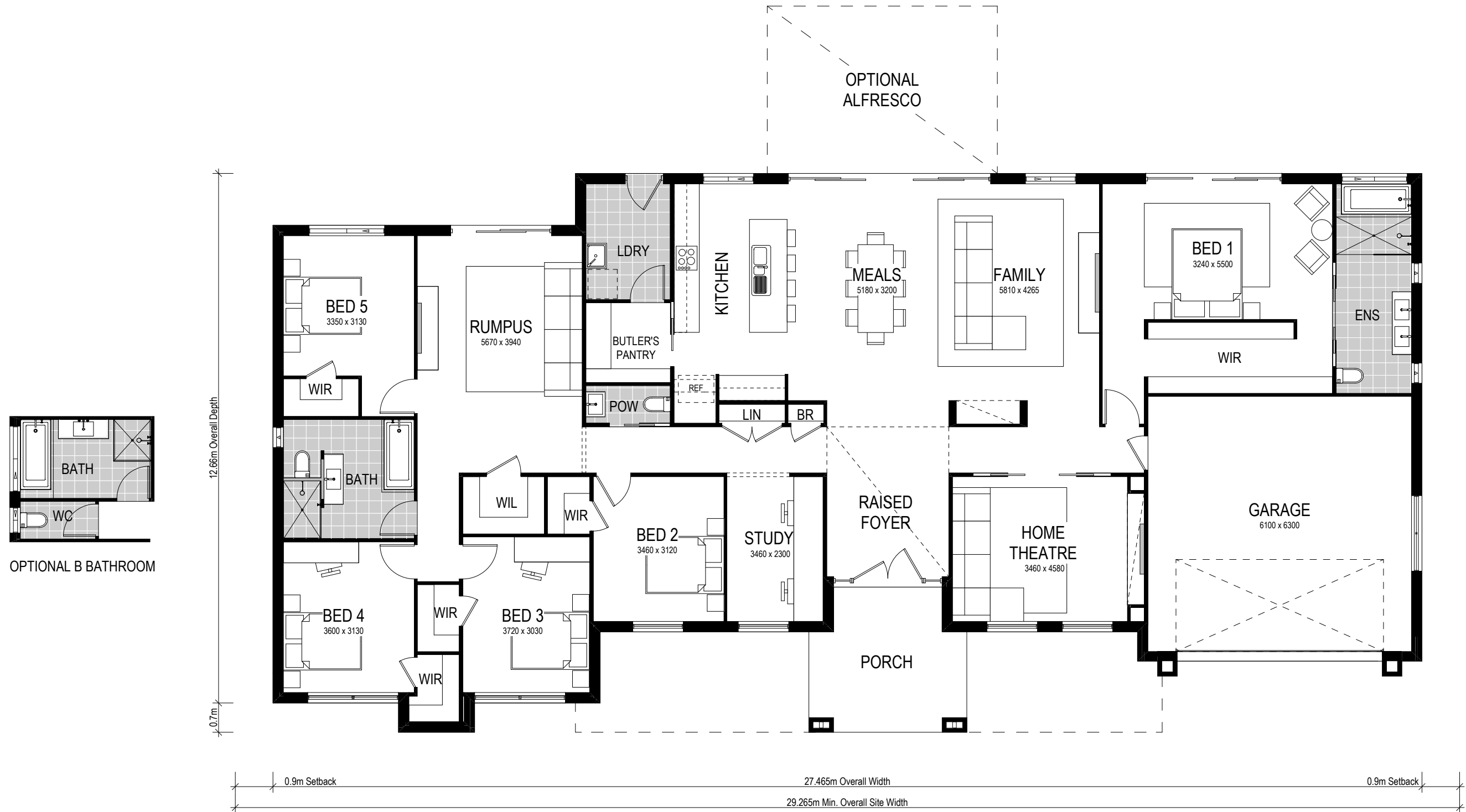
**Important - please read - copyright ©**  
All brochures, sketches & plans, whether conceptual or architectural, that we have developed on your behalf remain the property of Montgomery Homes under copyright law & we retain & claim all rights to these plans. Despite popular belief, changing our plans by 50% or more does not avoid legal responsibility for a copyright breach.



# Ridgeview 321







Scale: 1:100. Floor plan depicts Grande facade.

# Ridgeview 321

- 5 Bed
- 2.5 Bath
- 2 Park

The Ridgeview 321 is a single storey design suited for an acreage site. The design features separate home theatre, study, rumpus, open plan kitchen with Butler's pantry. The luxurious master suite occupies its own wing — with an extra large walk-in robe and ensuite, parents can retreat to their own private haven. Deliberately, the other four bedrooms are located on the opposite end of the home, right next to the bathroom, study and rumpus room, where the kids can enjoy their own time and space.

This home comes with many great features:

- ✓ Multiple facade options
- ✓ Variety of open plan living areas
- ✓ Easy to expand alfresco area
- ✓ Walk-In linen
- ✓ Butler's pantry
- ✓ Home theatre room
- ✓ Rumpus room
- ✓ Extra large garage