

Facade options and features



Grande Hamptons Facade Roof Type Colorbond Total m²/Sq 279.64/30.2



Manhattan Facade Roof Type Colorbond Total m²/Sq 280.77/30.2



Grande Facade Roof Type Colorbond Total m²/Sq 280.12/30.2



Hamptons Facade Roof Type Tiles Total m²/Sq 280.53/30.2



Retro Facade Roof Type Colorbond Total m²/Sq 279.20/30.1



Executive Facade Roof Type Tiles Total m²/Sq 280.52/30.2



Cosmo Facade Roof Type Tiles Total m²/Sq 275.81/29.7



Metro Facade Roof Type Tiles Total m²/Sq 276.17/29.7



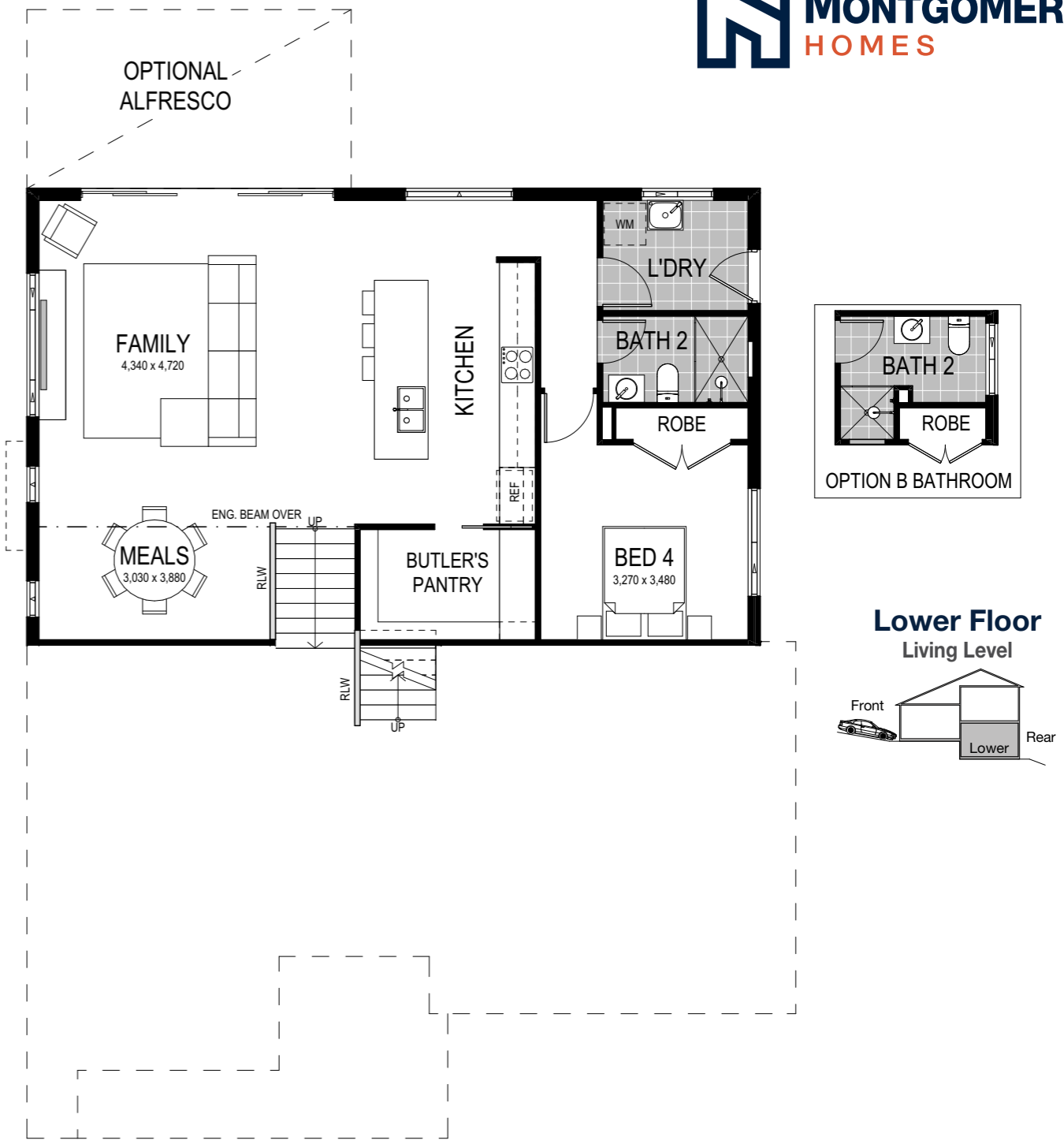
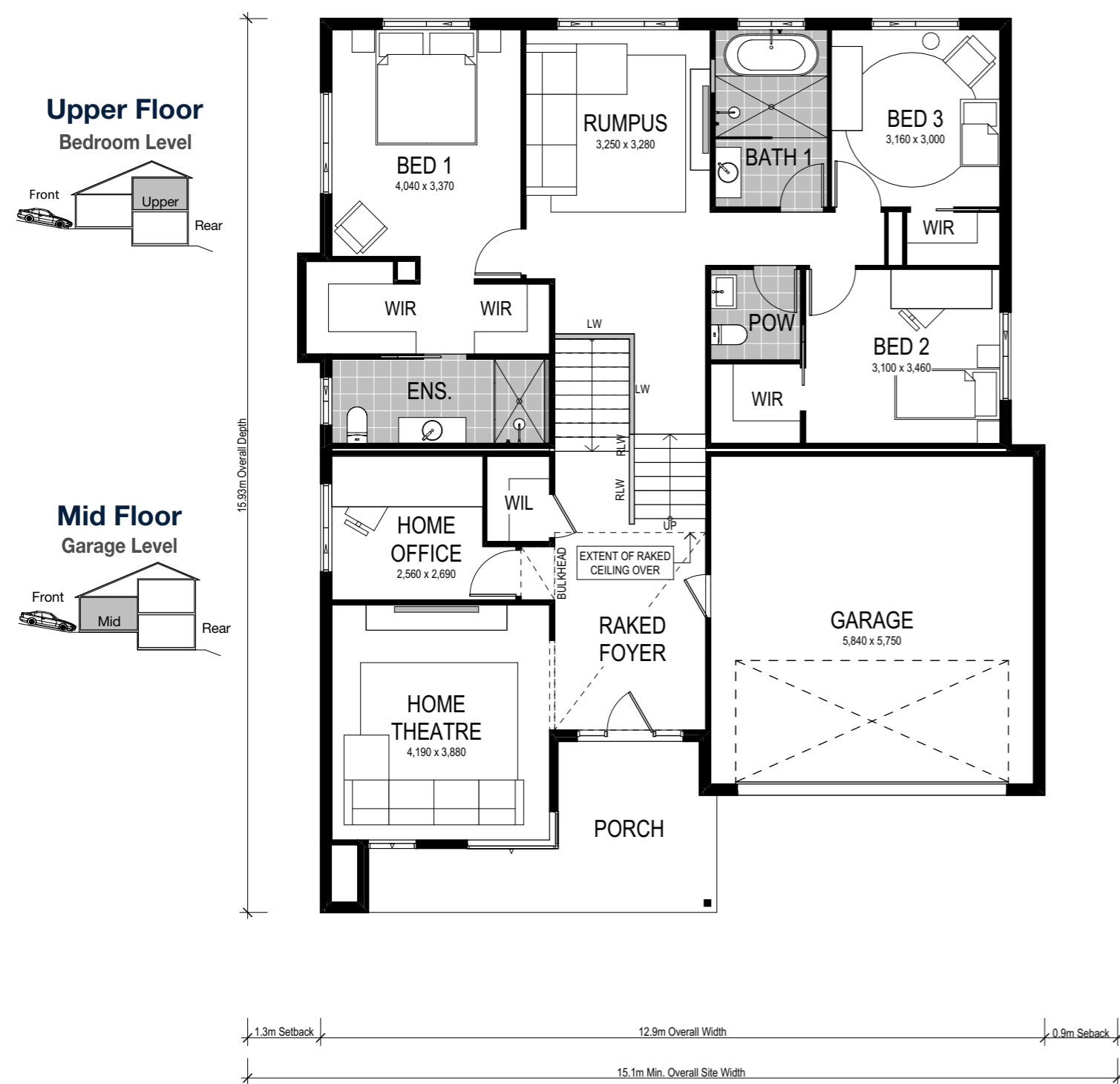
Note: Artist's impressions and pictures shown in this brochure may not be standard finishes – please refer to standard inclusions list for details. Images may depict homes from other design ranges and are used for illustrative purposes only.



Important - please read - copyright ©
All brochures, sketches & plans, whether conceptual or architectural, that we have developed on your behalf remain the property of Montgomery Homes under copyright law & we retain & claim all rights to these plans. Despite popular belief, changing our plans by 50% or more does not avoid legal responsibility for a copyright breach.

Carolina 2 281





Scale: 1:100. Floor plan depicts Manhattan facade.

Carolina 2 281

- 4 Bed
- 3 Bath
- 2 Park

The Carolina 2 281 boasts a distinctive downhill design across three levels, expertly crafted by Montgomery Homes. This design optimises flow, landscape views, and natural light. The mid-level greets you with an elevated foyer, housing a home theatre and office. Descend to the lower level for an expansive entertainment area with a kitchen, family space, meals area, and optional alfresco. A guest bedroom with a nearby bathroom completes this level. Upstairs, bedrooms encircle a rumpus room, with the master suite secluded on one side. This home suits a 15.5m wide block or larger, and offers 8 facade options: Cosmo, Executive, Grande, Grande-Hamptons, Hamptons, Manhattan, Metro and Retro.

- Our specially designed homes for sloping sites feature many benefits:
- ✓ Abundant natural light and air-flow
 - ✓ Separate living areas on different levels
 - ✓ Preserve natural drainage
 - ✓ Enhance outlooks and views
 - ✓ Unique and architectural looking design
 - ✓ Less excavation
 - ✓ A flatter driveway
 - ✓ Designed to follow slope of land
 - ✓ Maximise space

This home design is on display at:

Miranda
303 The Boulevard,
Miranda