



MONTGOMERY
HOMES



Shorehaven 238



LEVEL
SITES



Shorehaven 238

  
4 Bed 2.5 Bath 2 Park

The Shorehaven suite of double-storey designs showcase a narrow floorplan which doesn't compromise on luxury.

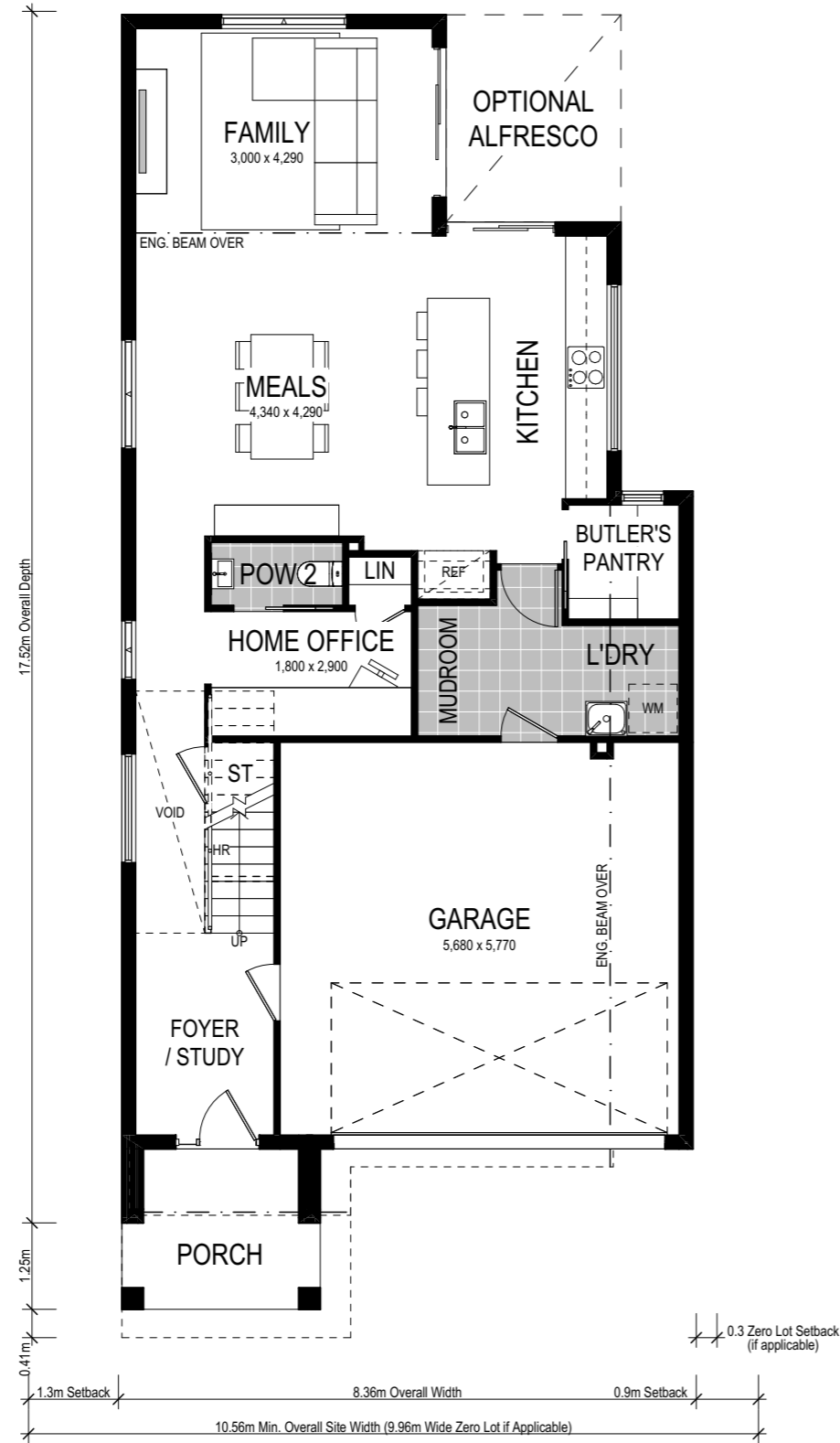
A standout design, the Shorehaven 238 is suitable for level sites with a 10.56m frontage (or 9.96m if zero lot) or wider.

Select from six facade options to seal the street appeal of your Shorehaven 238.

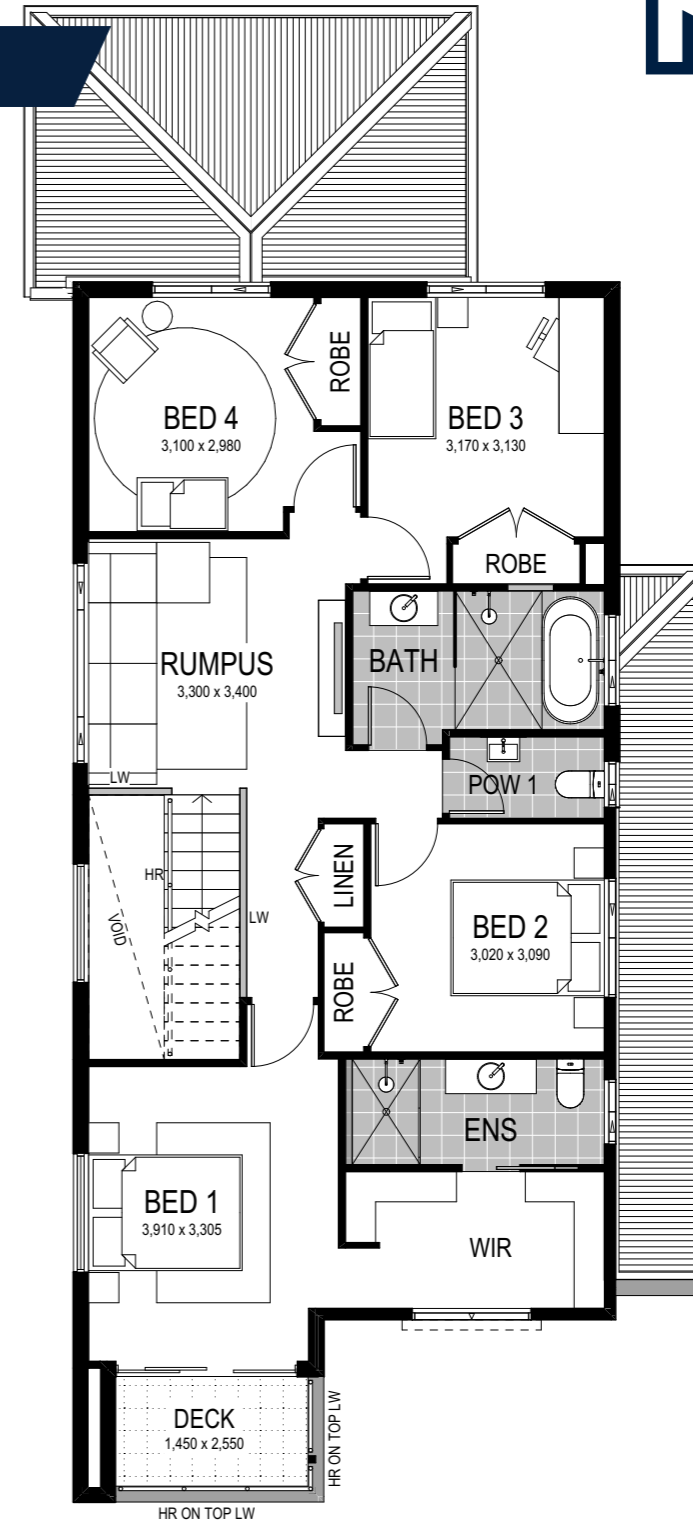


Option 1: Bedroom 1 to front

Lower Floor



Upper Floor



Scale: 1:100. Floor plan depicts Manhattan facade.

Shorehaven 1 238



4 Bed 2.5 Bath 2 Park

For ultimate convenience, the Shorehaven 1 238 features all four bedrooms to the upper level — with the master suite to the front. The main bathroom and bonus rumpus room complete the upper level. Descend the stunning staircase, and explore the spacious entertainment precinct — including an open-plan kitchen, meals and family zone, plus mud room and study! The nearby Butler's Pantry will ensure food preparation mess is kept out of sight, whilst providing an ideal storage location for appliances.

This home comes with many great features:

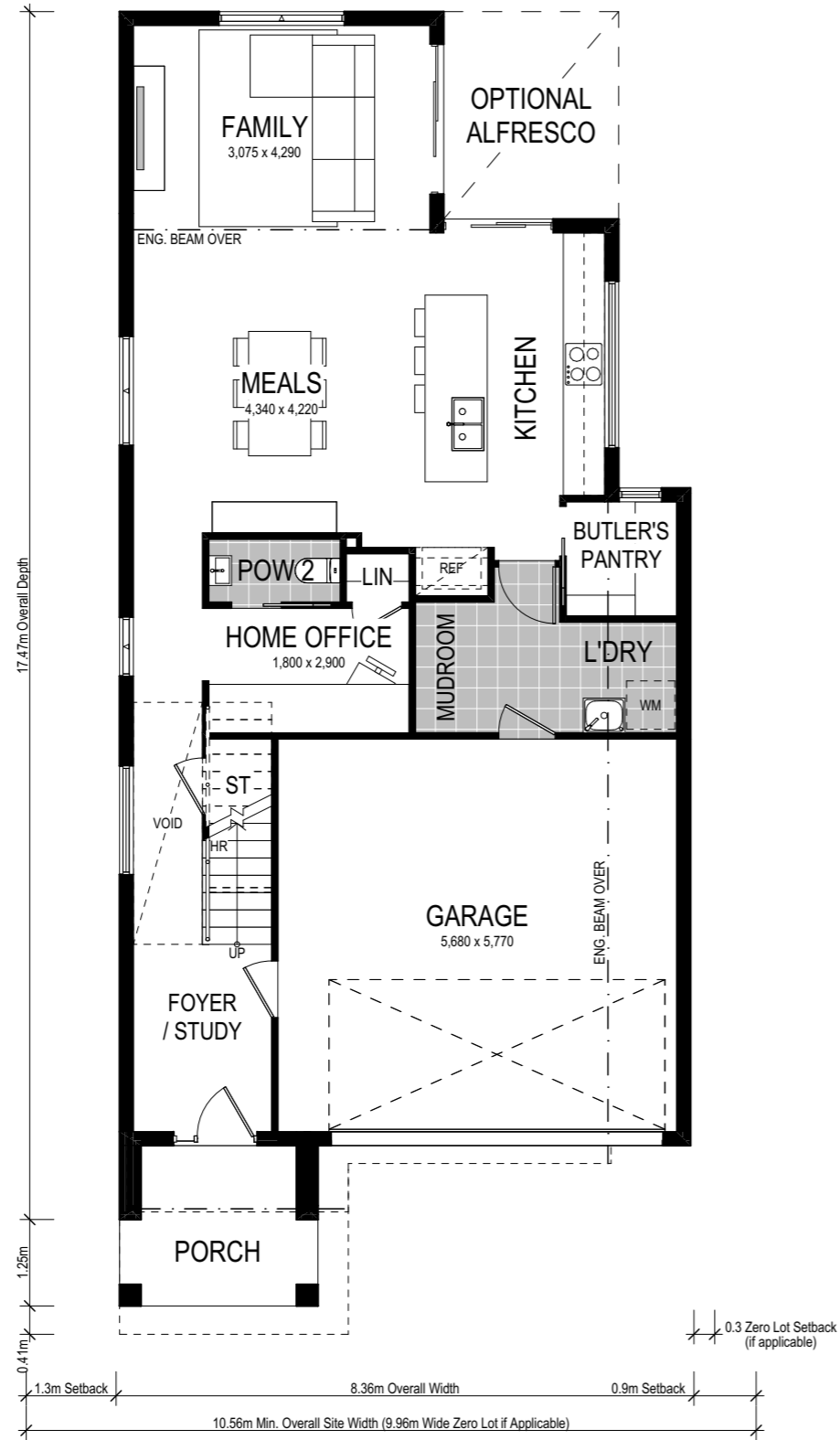
- ✓ Variety of open plan living areas
- ✓ Flexibility to adapt the floor plan
- ✓ Easy to expand to alfresco area
- ✓ Smart storage options
- ✓ Multiple facade options
- ✓ Mud room
- ✓ Butler's pantry
- ✓ Home office

This home is on display at:

Wilton Greens
22 Davisland Ave
Wilton

Option 2: Bedroom 1 to rear

Lower Floor



Upper Floor



Scale: 1:100. Floor plan depicts Grande facade.

Shorehaven 2 238



4 Bed 2.5 Bath 2 Park

Alongside the aforementioned benefits of the Shorehaven 1 238, this alternate floorplan places the master bedroom to the rear of the upper level. In a nod to the practicality of this floorplan, the master suite features a stunning walk-in robe and well-appointed ensuite. Plus, you'll never be short of storage with the Shorehaven floorplan featuring an integrated mudroom and laundry – ideal for family living.

This home comes with many great features:

- ✓ Variety of open plan living areas
- ✓ Flexibility to adapt the floor plan
- ✓ Easy to expand to alfresco area
- ✓ Smart storage options
- ✓ Multiple facade options
- ✓ Mud room
- ✓ Butler's pantry
- ✓ Home theatre
- ✓ Walk-in linen

A Shorehaven 1 238 is on display at:

Wilton Greens
22 Davisland Ave
Wilton

Facade options and features



Manhattan Facade

 **Roof Type**
Colorbond

 **Total m²/Sq**
233.42/25.1



Hamptons Facade


 **Roof Type**
Tiles

 **Total m²/Sq**
231.50/24.9



Grande Facade

 **Roof Type**
Colorbond

 **Total m²/Sq**
233.42/25.1



Executive Facade


 **Roof Type**
Tiles

 **Total m²/Sq**
234.31/25.2



Retro Facade

 **Roof Type**
Colorbond

 **Total m²/Sq**
234.72/25.3



Metro Facade

 **Roof Type**
Tiles

 **Total m²/Sq**
226.01/24.3

Note: Artist's impressions and pictures shown in this brochure may not be standard finishes – please refer to standard inclusions list for details. Photographs may depict homes from other design ranges and are used for illustrative purposes only. Manhattan, Hamptons, and Provincial facades, as well as gables, are not available for projects classified under BAL Flame Zone (BAL-FZ) due to certification complexities.

Important - please read - copyright ©

All brochures, sketches & plans, whether conceptual or architectural, that we have developed on your behalf remain the property of Montgomery Homes under copyright law & we retain & claim all rights to these plans. Despite popular belief, changing our plans by 50% or more does not avoid legal responsibility for a copyright breach.

