

Facade options and features



Manhattan Facade

Roof Type
Colorbond

Total m²/Sq
256.96/27.7



Grande Facade

Roof Type
Colorbond

Total m²/Sq
263.63/28.4



Hamptons Facade

Roof Type
Tiles

Total m²/Sq
261.87/28.2



Executive Facade

Roof Type
Tiles

Total m²/Sq
256.96/27.7



Retro Facade

Roof Type
Colorbond

Total m²/Sq
262.32/28.2



Metro Facade

Roof Type
Tiles

Total m²/Sq
262.03/28.2



Note: Artist's impressions and pictures shown in this brochure may not be standard finishes – please refer to standard inclusions list for details. Photographs may depict homes from other design ranges and are used for illustrative purposes only. Manhattan, Hamptons, and Provincial facades, as well as gables, are not available for projects classified under BAL Flame Zone (BAL-FZ) due to certification complexities.

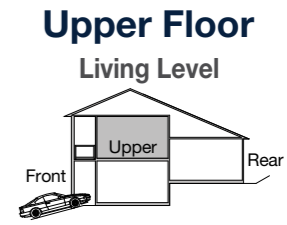
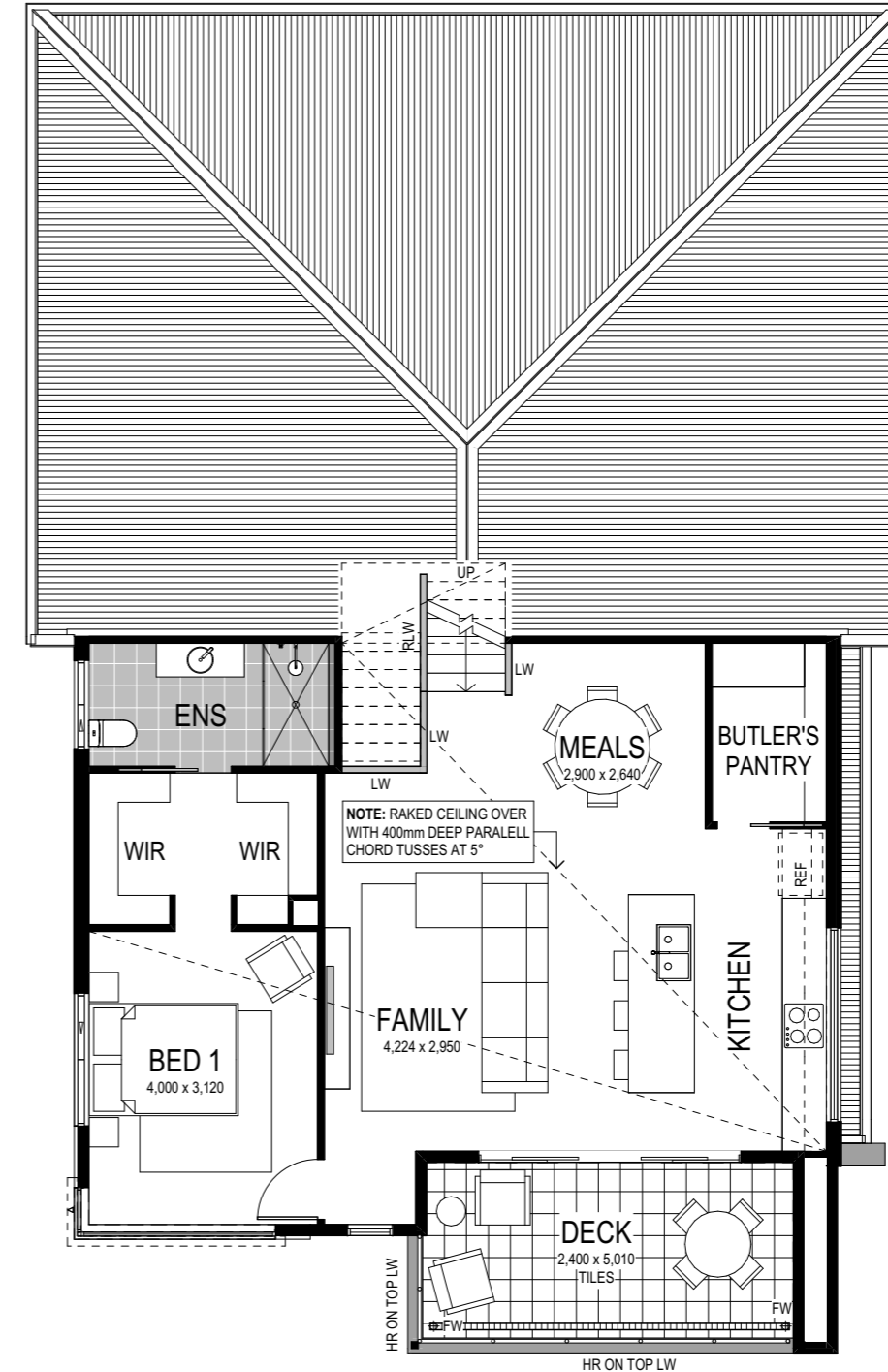
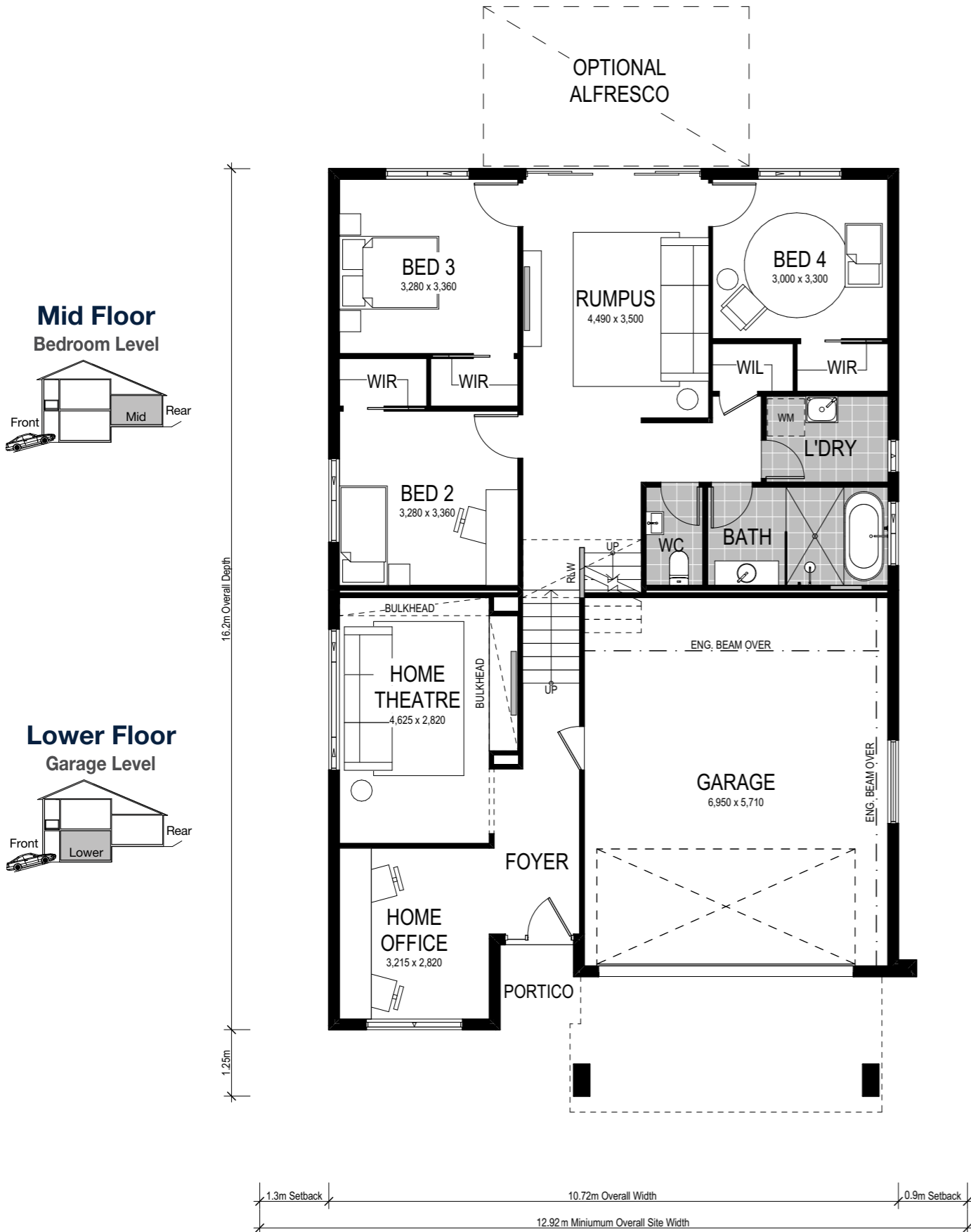
Important - please read - copyright ©

All brochures, sketches & plans, whether conceptual or architectural, that we have developed on your behalf remain the property of Montgomery Homes under copyright law & we retain & claim all rights to these plans. Despite popular belief, changing our plans by 50% or more does not avoid legal responsibility for a copyright breach.



Riviera 2 264





Scale: 1:100. Floor plan depicts Manhattan facade.

Riviera 2 264

- 4 Bed
- 2 Bath
- 2 Park

The Riviera 2 264 is an enchanting home split-level design crafted to suit an uphill sloping site. With a floorplan spreading across three levels, a spacious foyer on the lower level welcomes you to a private home office and home theatre — perfect for movie marathons. Ascending the stairs to the mid-level, find three bedrooms (each with a walk-in robe), the main bathroom, laundry and bonus rumpus room. The upper level ignites your entertainment haven — with an open-plan kitchen, Butler’s Pantry, meals and family zone. Completing the upper level is a spacious covered deck to the kitchen, and the luxurious master suite including dual walk-in robes and ensuite.

Our specially designed homes for sloping sites feature many benefits:

- ✓ Abundant natural light and air-flow
- ✓ Separate living areas on different levels
- ✓ Preserve natural drainage
- ✓ Enhance outlooks and views
- ✓ Unique and architectural looking design
- ✓ Less excavation
- ✓ A flatter driveway
- ✓ Designed to follow slope of land
- ✓ Maximise space

This home is on display at:

HomeWorld Warnervale
5 Turret Cct
Warnervale