

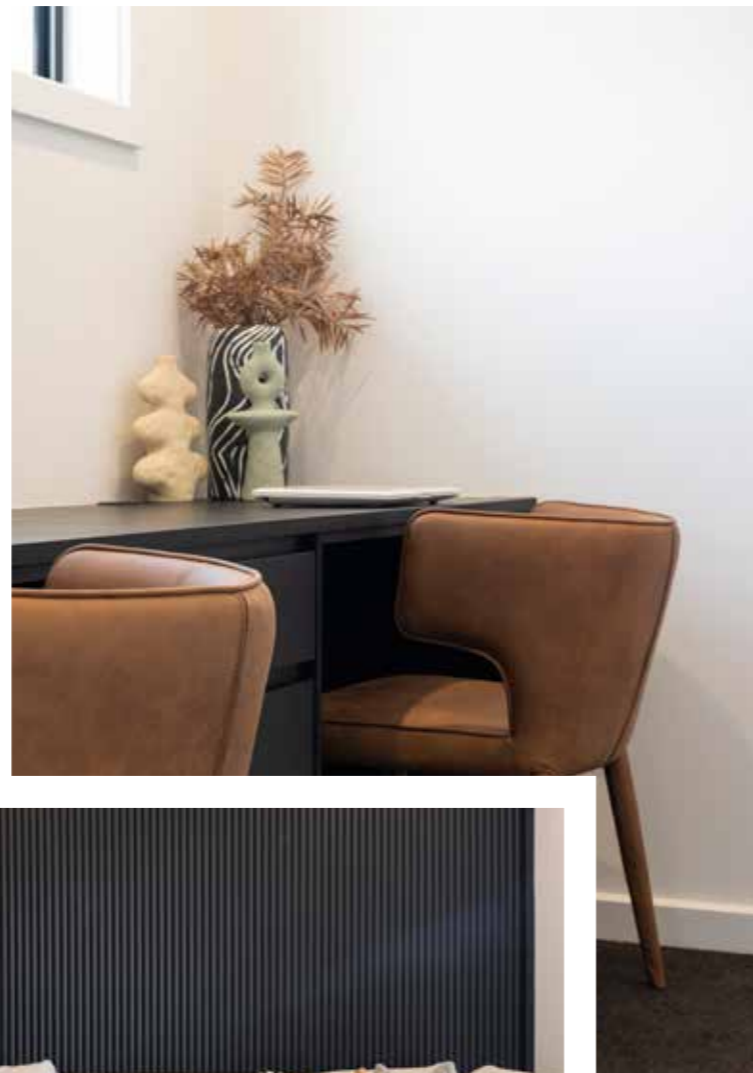


MONTGOMERY
HOMES





Apollo 211

 **LEVEL**
SITES

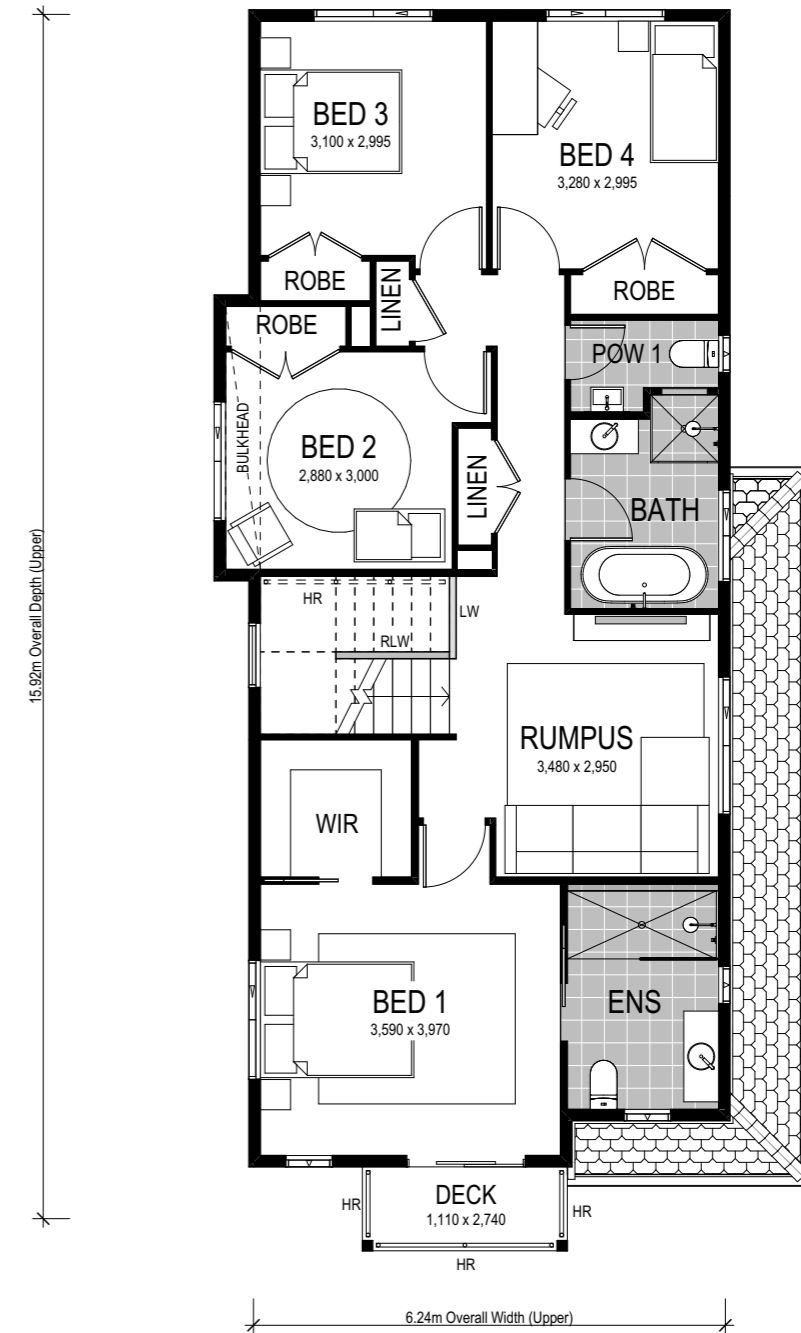
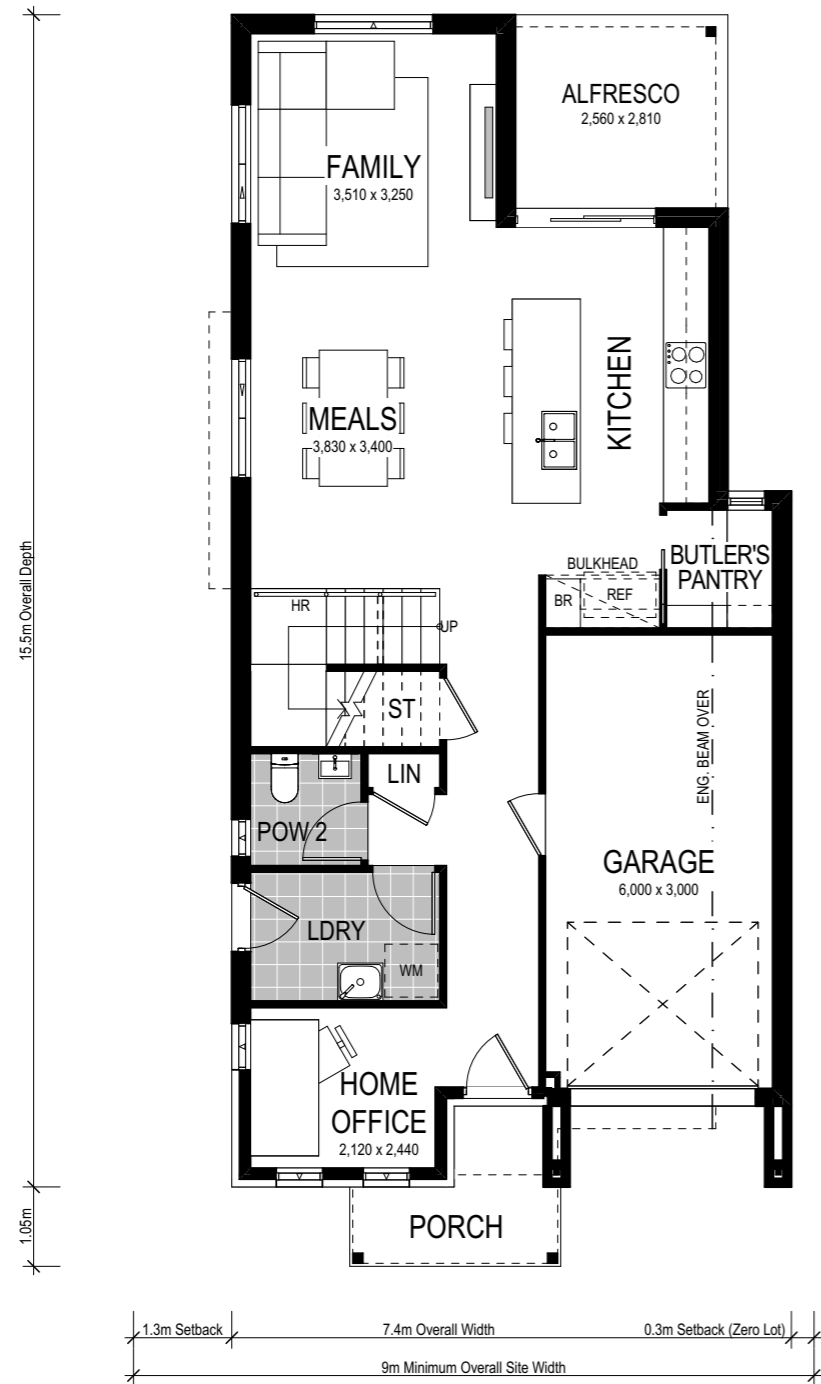


Apollo 211




 4 Bed 2.5 Bath 1 Park

The Apollo 211 is Montgomery Homes' newest double-storey design tailored for narrow blocks 9.0m or wider. Cleverly spread across two levels — multiple living spaces and roomy bedrooms means everyone has space to rest and rejuvenate. The Apollo 211 features a choice of five beautiful facade options.





Scale: 1:100. Floor plan depicts Hamptons facade.

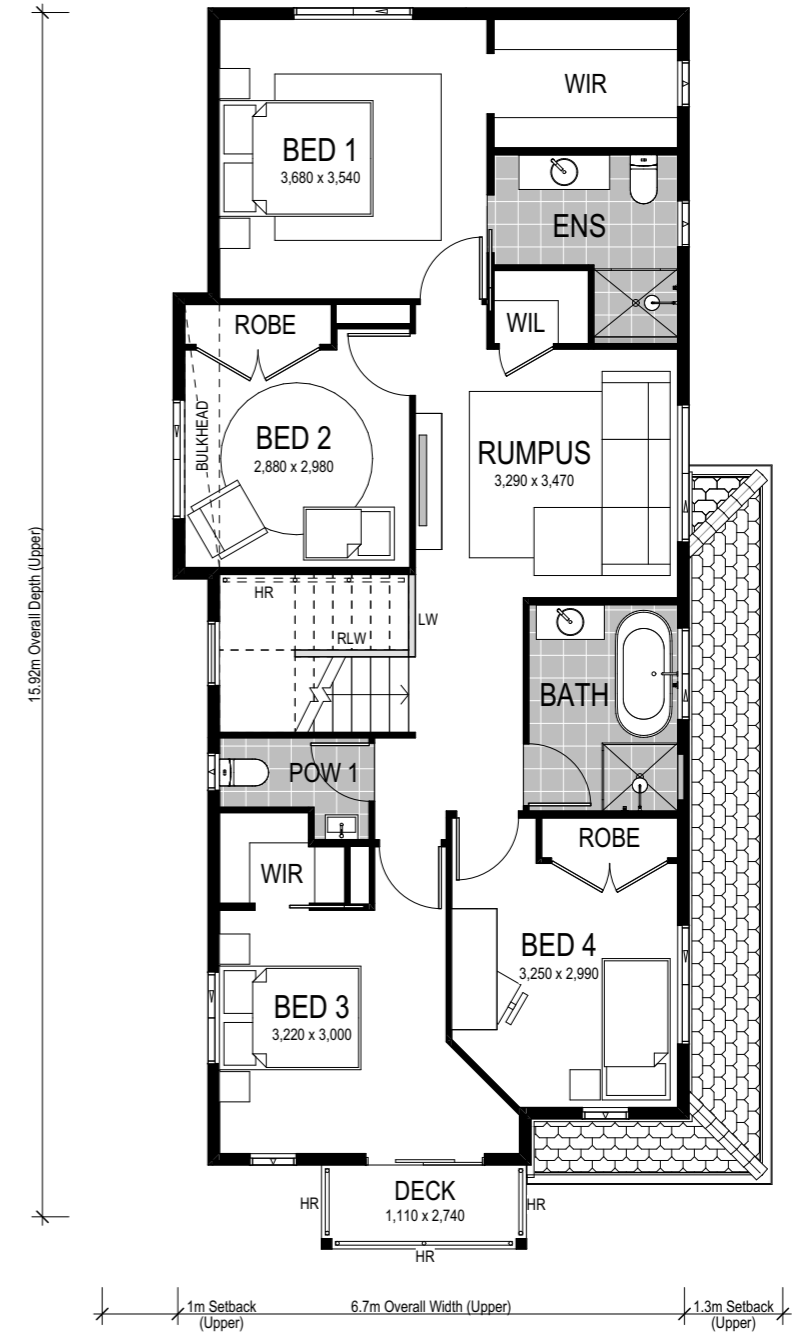
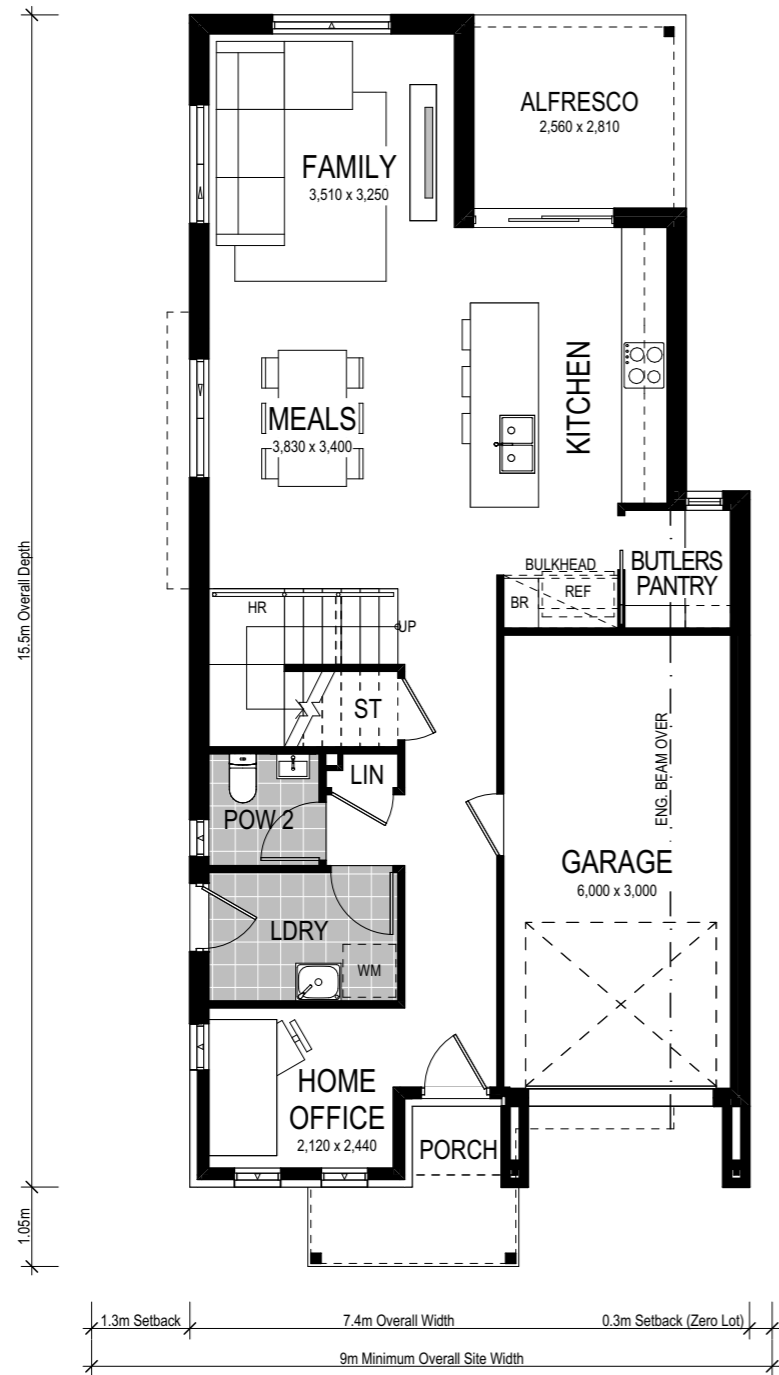
Apollo 1 211

-  4 Bed
-  2.5 Bath
-  1 Park

Combining luxury and practicality — the Apollo 1 211 maximises on every inch of floorplan space. Explore a long hallway that leads to a home office, laundry room, and powder room, with the rear entertainment area blending functionality with luxury through an open-plan dining and family zone that extends to the alfresco area. The distinctive U-shaped staircase leads to the upper level, where four bedrooms ensure privacy and tranquillity, complemented by a bonus rumpus room. Experience how the Apollo 1 211 combines efficient space utilisation with elegant living for modern families. The Apollo 1 211 delivers a master bedroom to the front of the home.

This home comes with many great features:

- ✓ Variety of open plan living areas
- ✓ Multiple facade options
- ✓ Smart storage options
- ✓ Alfresco area
- ✓ Butler's pantry
- ✓ Home Office



Scale: 1:100. Floor plan depicts Hamptons facade.

Apollo 2 211



4 Bed 2 Bath 1 Park

The Apollo 2 211 sees placement of the master bedroom to the rear of the upper level — alongside the aforementioned luxurious features of this floorplan. With the main entertaining spaces on the lower level, this home is perfect for families and couples who love to entertain. An open-plan kitchen, meals and family zone is complemented with a nearby Butler's Pantry and alfresco. This alternate floorplan grants flexibility to homeowners for the upper level, whilst maintaining the practicality of the lower level living spaces.


This home comes with many great features:

- ✓ Variety of open plan living areas
- ✓ Multiple facade options
- ✓ Smart storage options
- ✓ Alfresco area
- ✓ Butler's pantry
- ✓ Home Office
- ✓ Walk-in Linen

Facade options and features




Hamptons Facade

 **Roof Type**
Tiles

 **Total m²/Sq**
210.63/22.7



Executive Facade

 **Roof Type**
Tiles

 **Total m²/Sq**
209.58/22.6



Retro Facade

 **Roof Type**
Colorbond

 **Total m²/Sq**
204.49/22.0



Alpine Facade

 **Roof Type**
Colorbond

 **Total m²/Sq**
204.19/22.0



Metro Facade

 **Roof Type**
Tiles

 **Total m²/Sq**
204.31/22.0

Note: Artist's impressions and pictures shown in this brochure may not be standard finishes – please refer to standard inclusions list for details. Images may depict homes from other design ranges and are used for illustrative purposes only.

Important - please read - copyright ©



All brochures, sketches & plans, whether conceptual or architectural, that we have developed on your behalf remain the property of Montgomery Homes under copyright law & we retain & claim all rights to these plans. Despite popular belief, changing our plans by 50% or more does not avoid legal responsibility for a copyright breach.